

ORGANIZATION GUIDE

APRIL 2024





ORGANIZATION GUIDE

APRIL 2024

1. Office of the President

- 1A Office International Education & Global Engagement
- 2 Office of Instruction
- 3 Office of Student Services
- 4 Office of Business & Administrative Services
- 5 Office of Human Resources
- 6 Office of Diversity, Equity, Inclusion & Access
- 7 Office of Strategic Communications & Marketing

2. Office of Instruction

- 2A Health Occupations & Nursing
- 2B Humanities
- 2C Business, Communications & Social Sciences
- 2D-1 Science, Technology, Engineering & Math (STEM)
- 2D-2 Automotive & Manufacturing
- 2E Library, Learning Resources & Continuing Education
- 2F Workforce Education

3. Office of Student Services

- 3A Access & Advising
- 3B Student Support Services

4. Office of Business & Administrative Services

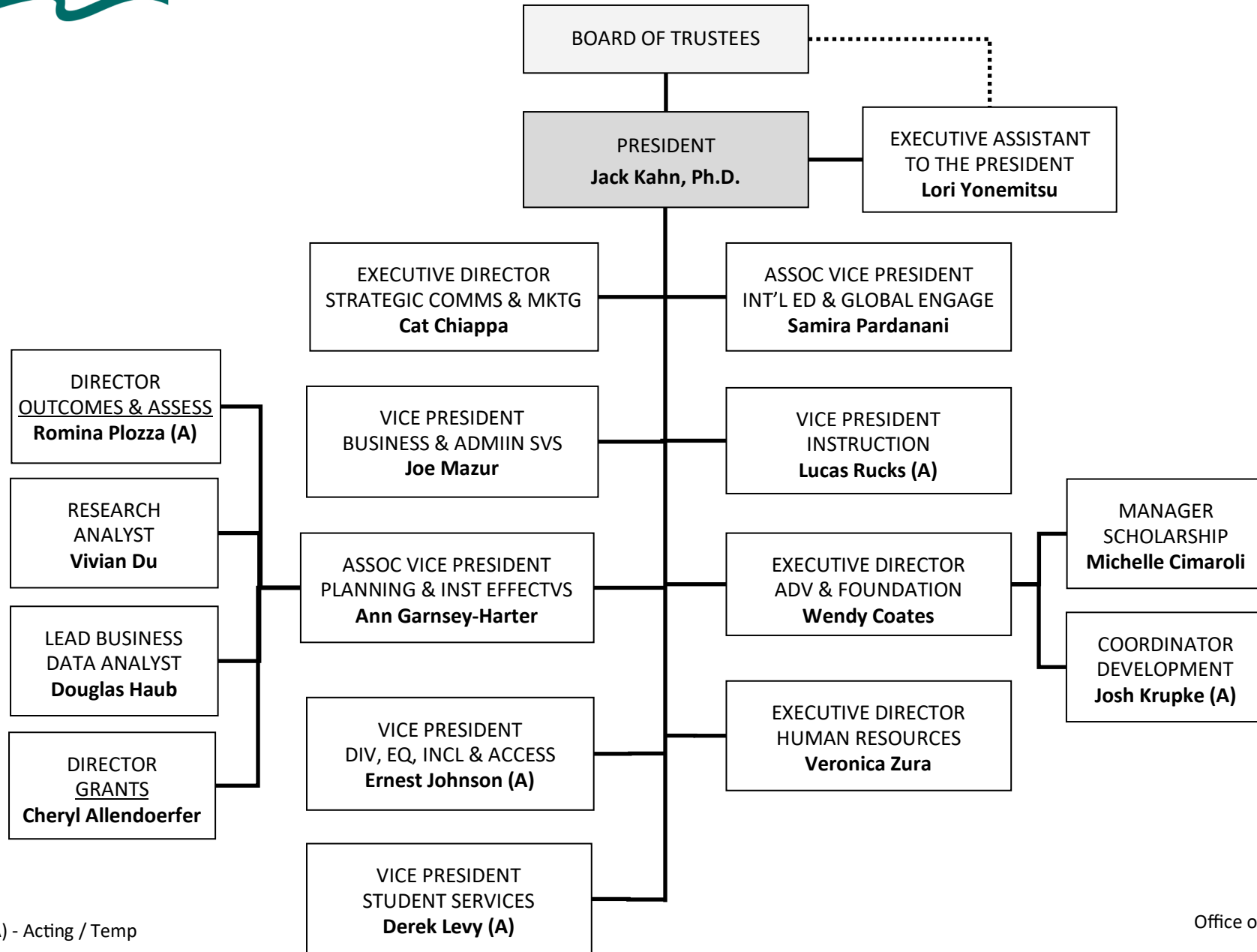
- 4A Facilities, Logistical Services & Capital Projects
- 4B Financial Services & Budgets
- 4C Parent-Child Center
- 4D Technology Support Services

5. Office of Human Resources

- 5A Safety & Security / Emergency Services

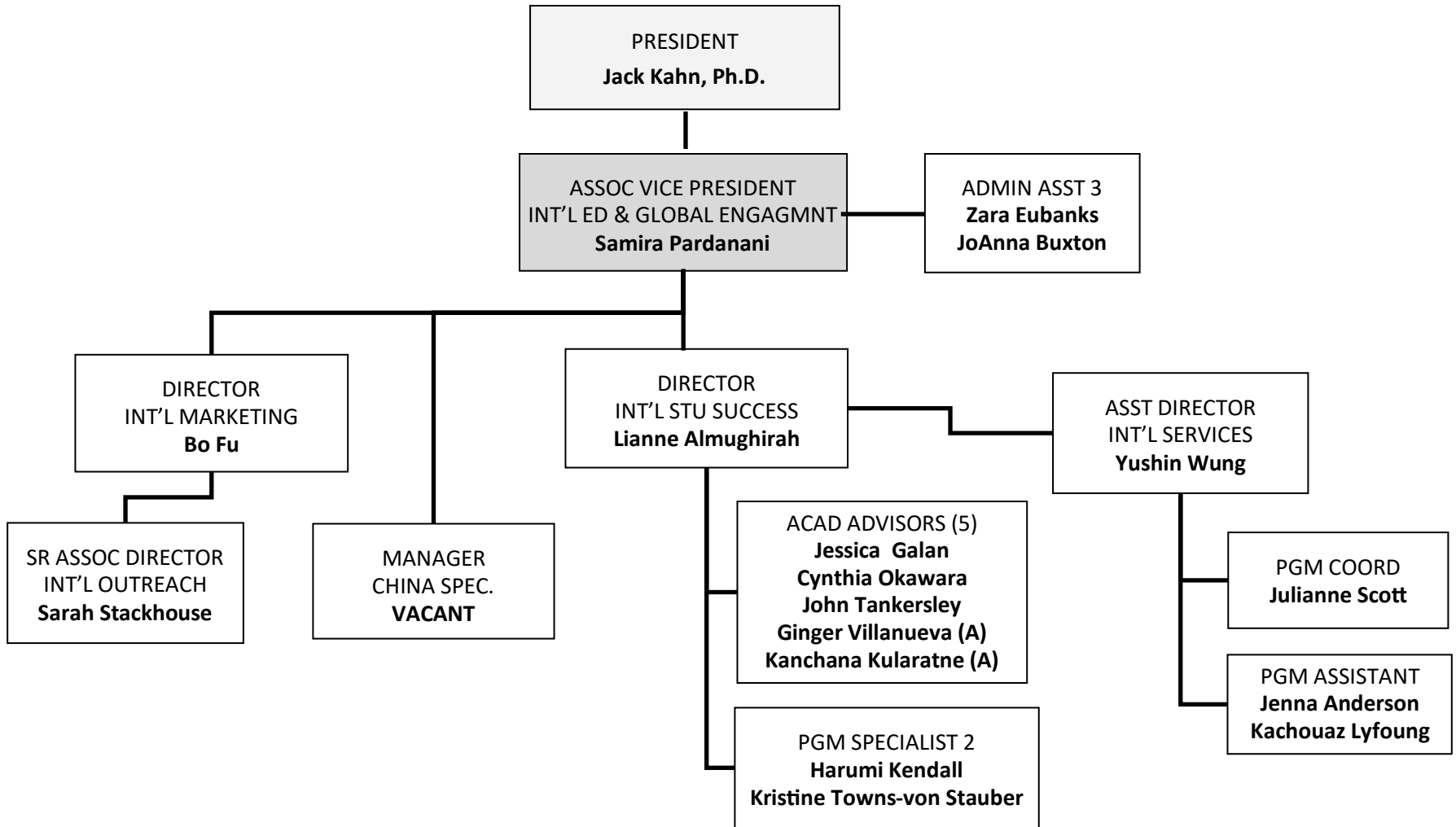
6. Office of Diversity, Equity & Inclusion

7. Office of Strategic Communications & Marketing



(A) - Acting / Temp

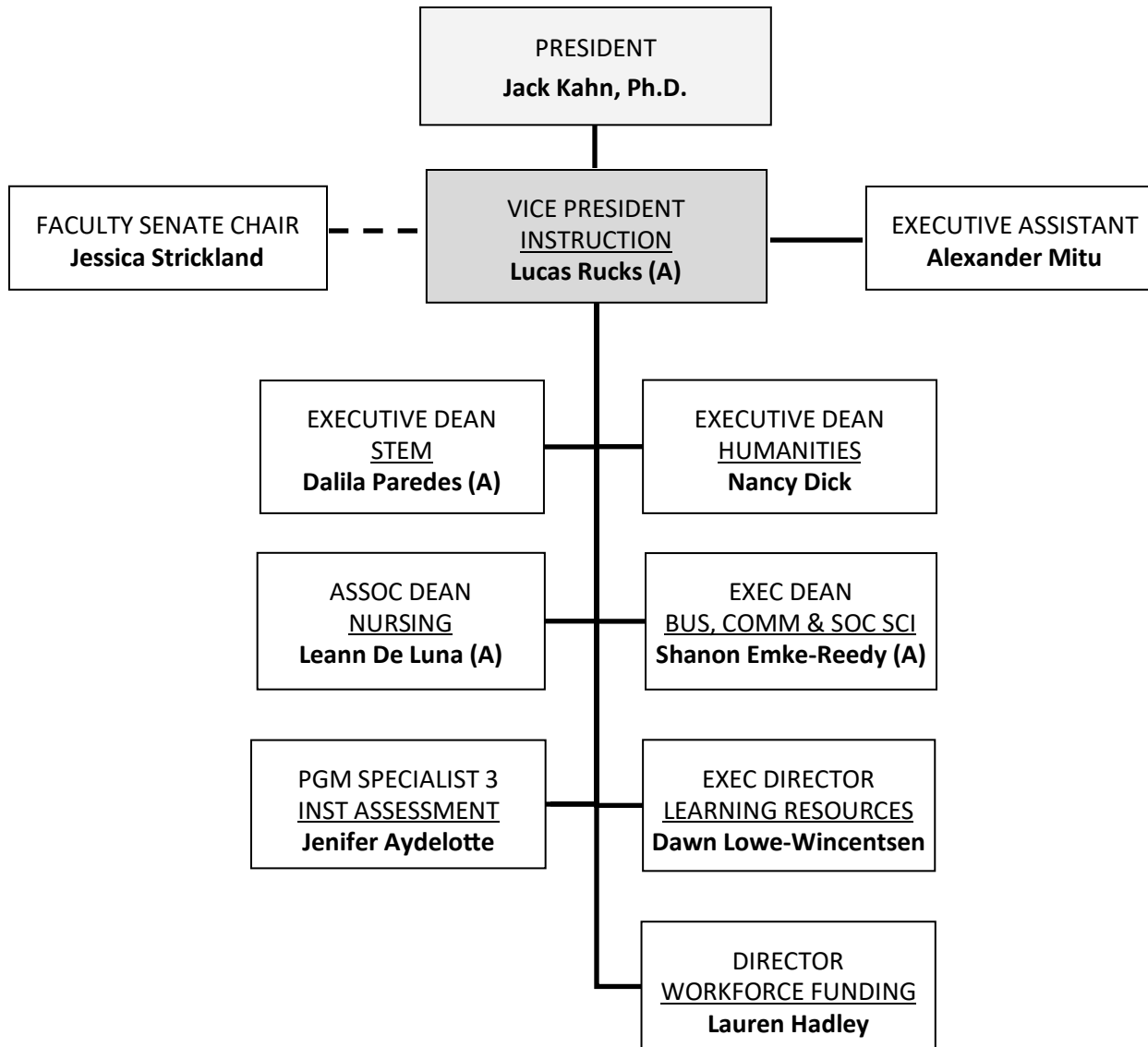
OFFICE OF INTERNATIONAL EDUCATION & GLOBAL ENGAGEMENT



(a) Full-Time Annual Faculty



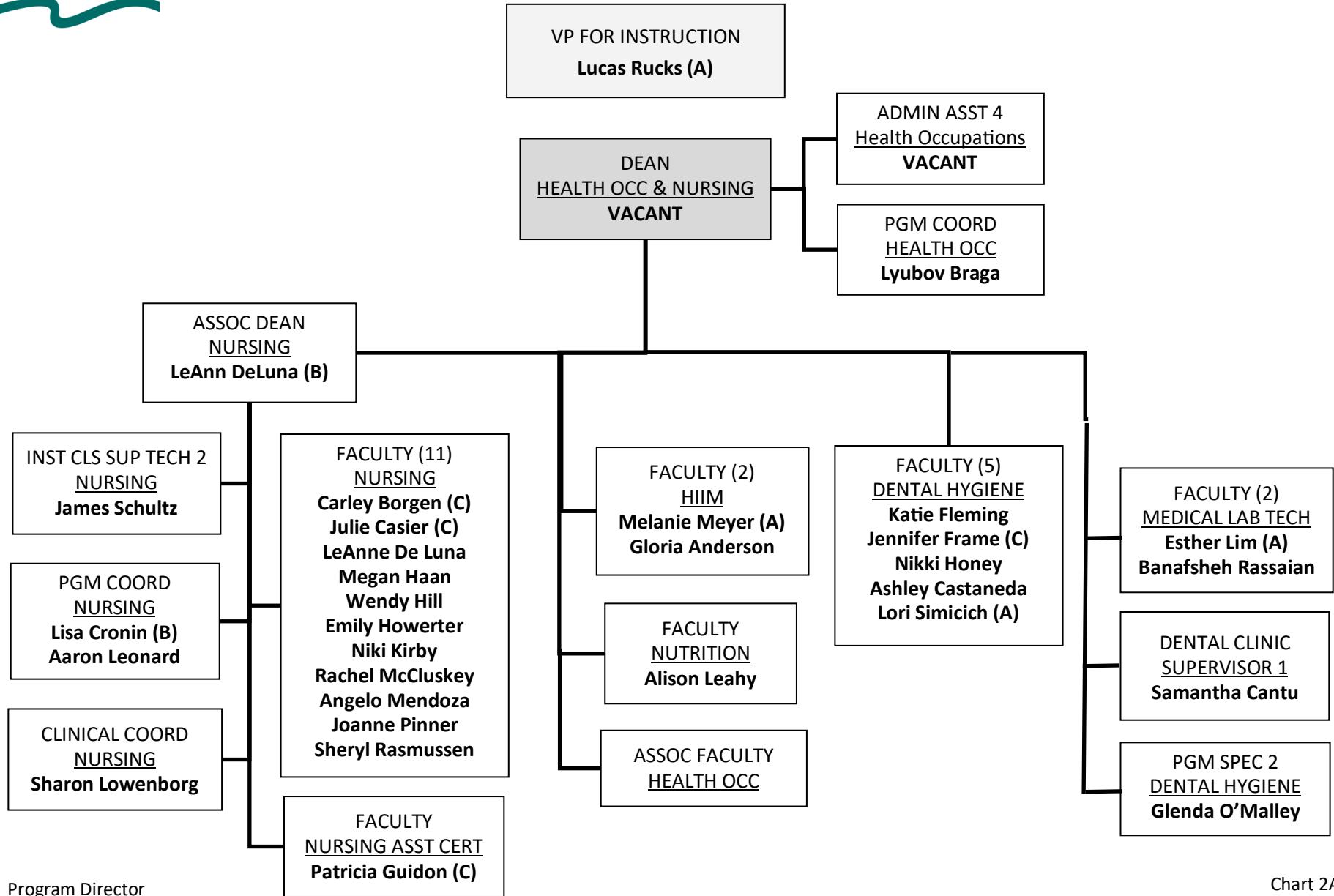
OFFICE OF INSTRUCTION



(A) Temp / Grant



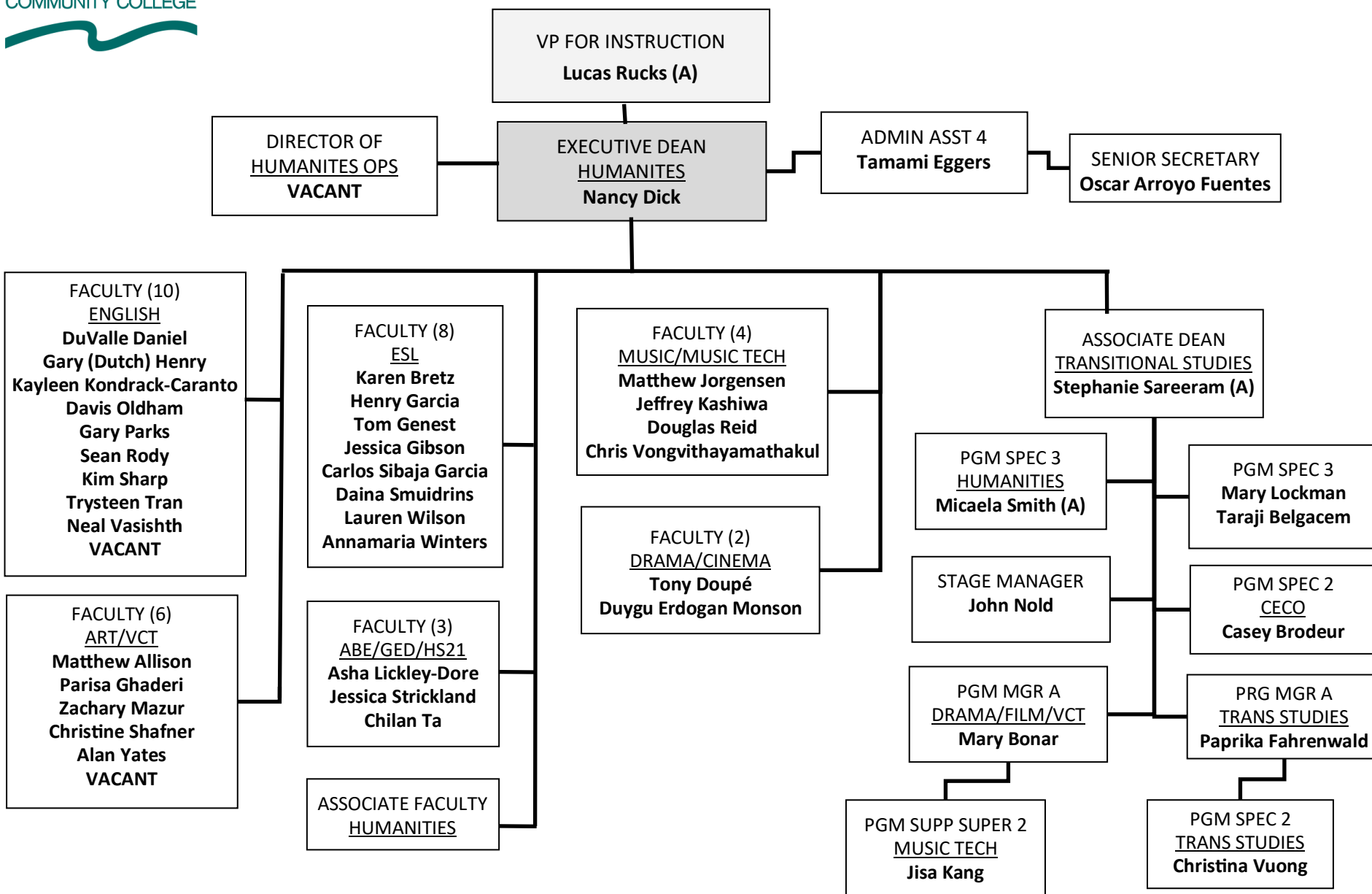
OFFICE OF HEALTH OCCUPATIONS & NURSING



- (A) Program Director
- (B) Temp/Grant Position
- (C) FT Annual / Pro-Rata



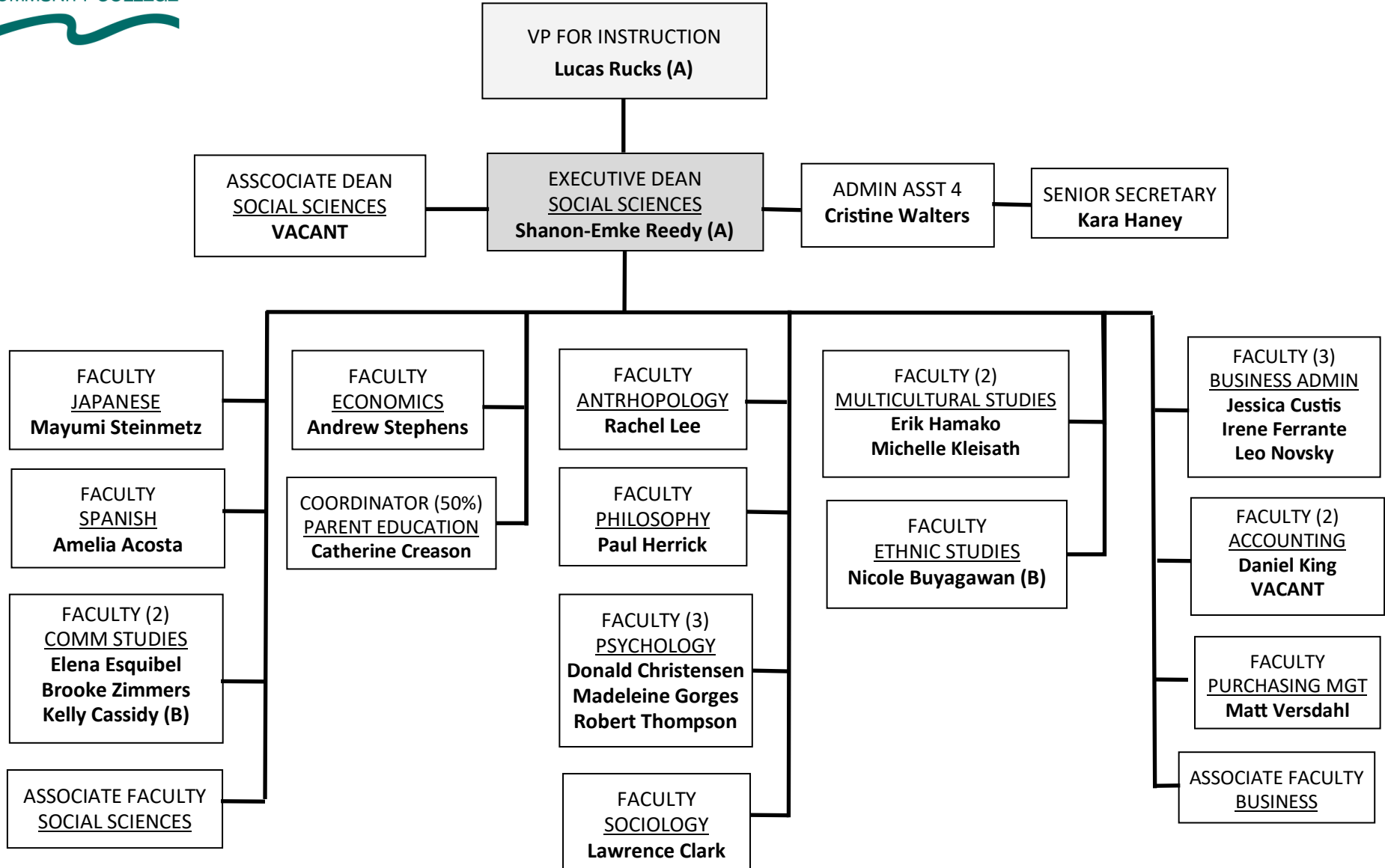
OFFICE OF INSTRUCTION — HUMANITIES



(A) Temp/Grant



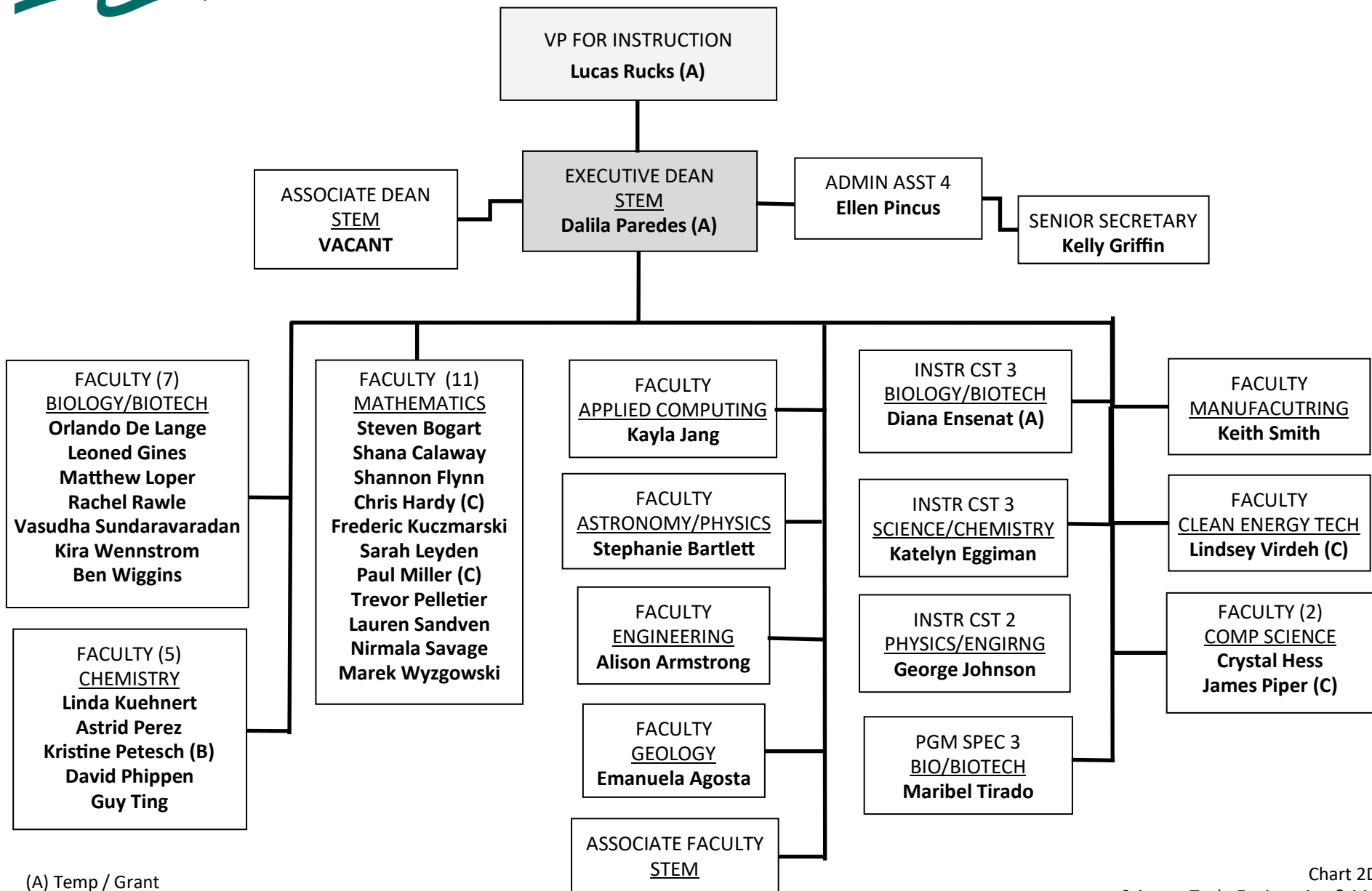
OFFICE OF INSTRUCTION — BUSINESS, COMMUNICATIONS & SOCIAL SCIENCES



(A) Temp / Grant
(B) FT Annual / Pro-Rata



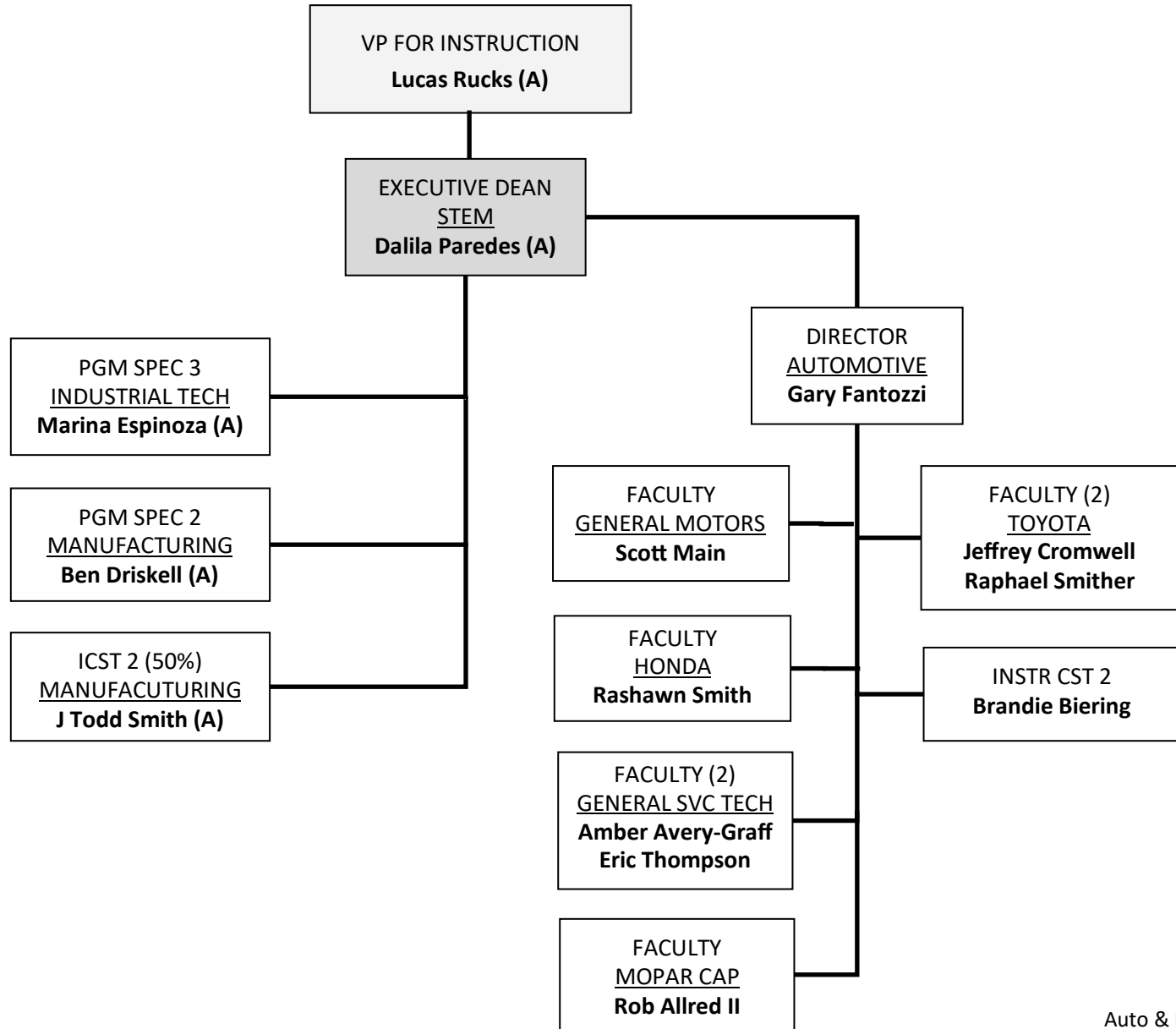
OFFICE OF INSTRUCTION—SCIENCE, TECH, ENGINEERING & MATH (STEM)



(A) Temp / Grant
 (B) Faculty Union President
 (C) FT Annual / Pro-Rata



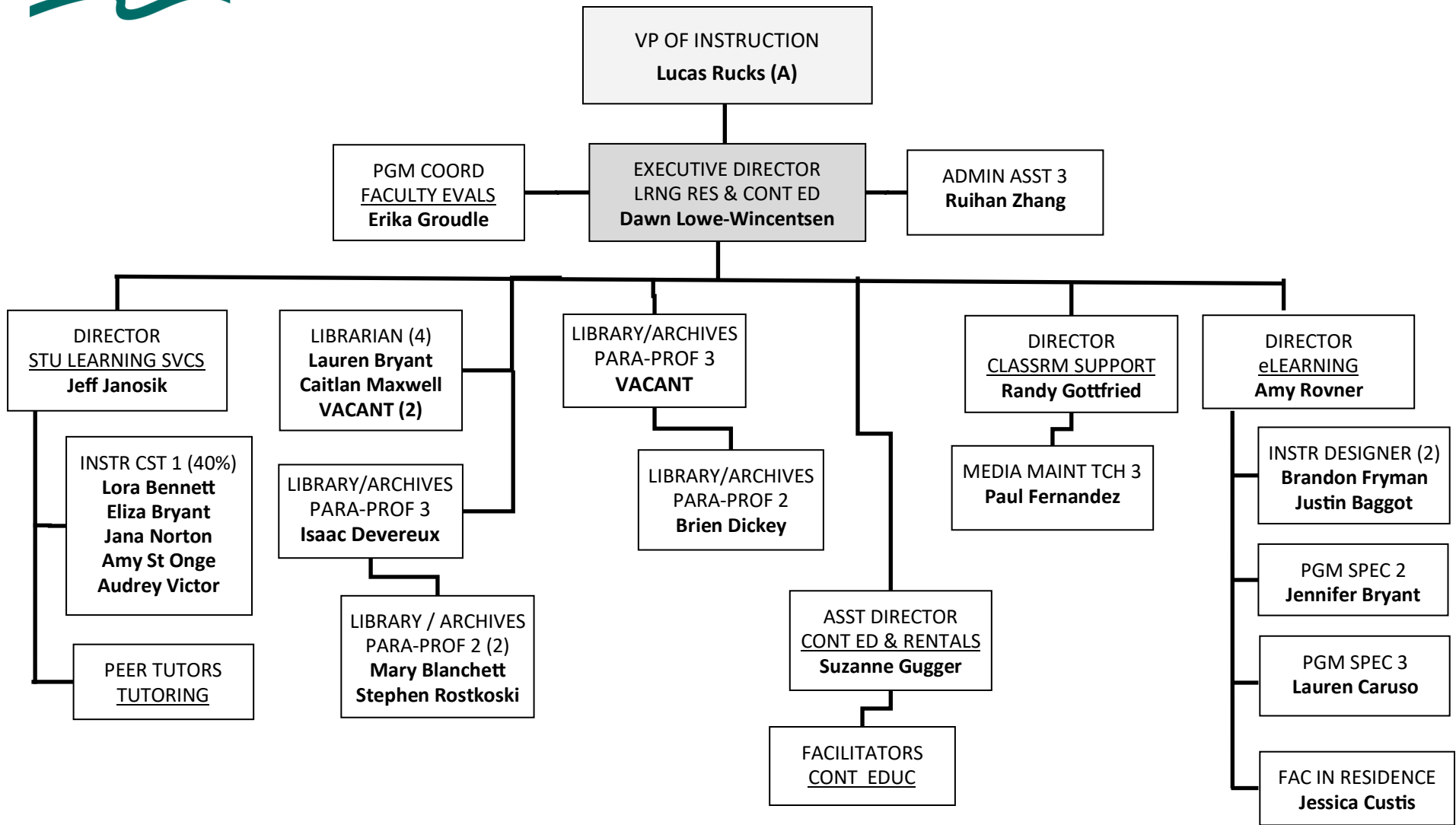
OFFICE OF INSTRUCTION—AUTOMOTIVE & MANUFACTURING



(A) Temp / Grant



OFFICE OF INSTRUCTION — LEARNING RESOURCES & CONT ED

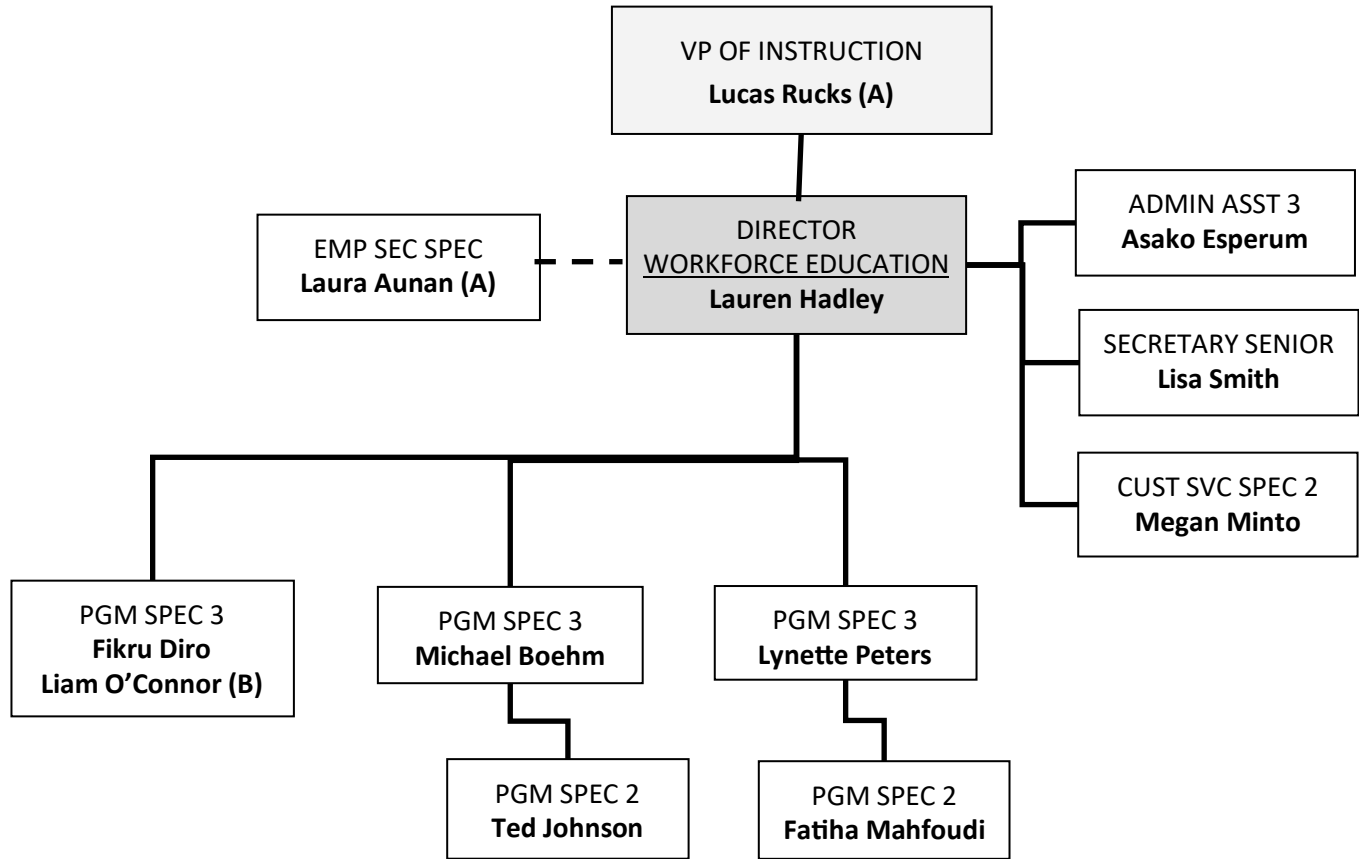


(A) Temp / Grant

Chart 2E
Learning Resources, Cont Educ



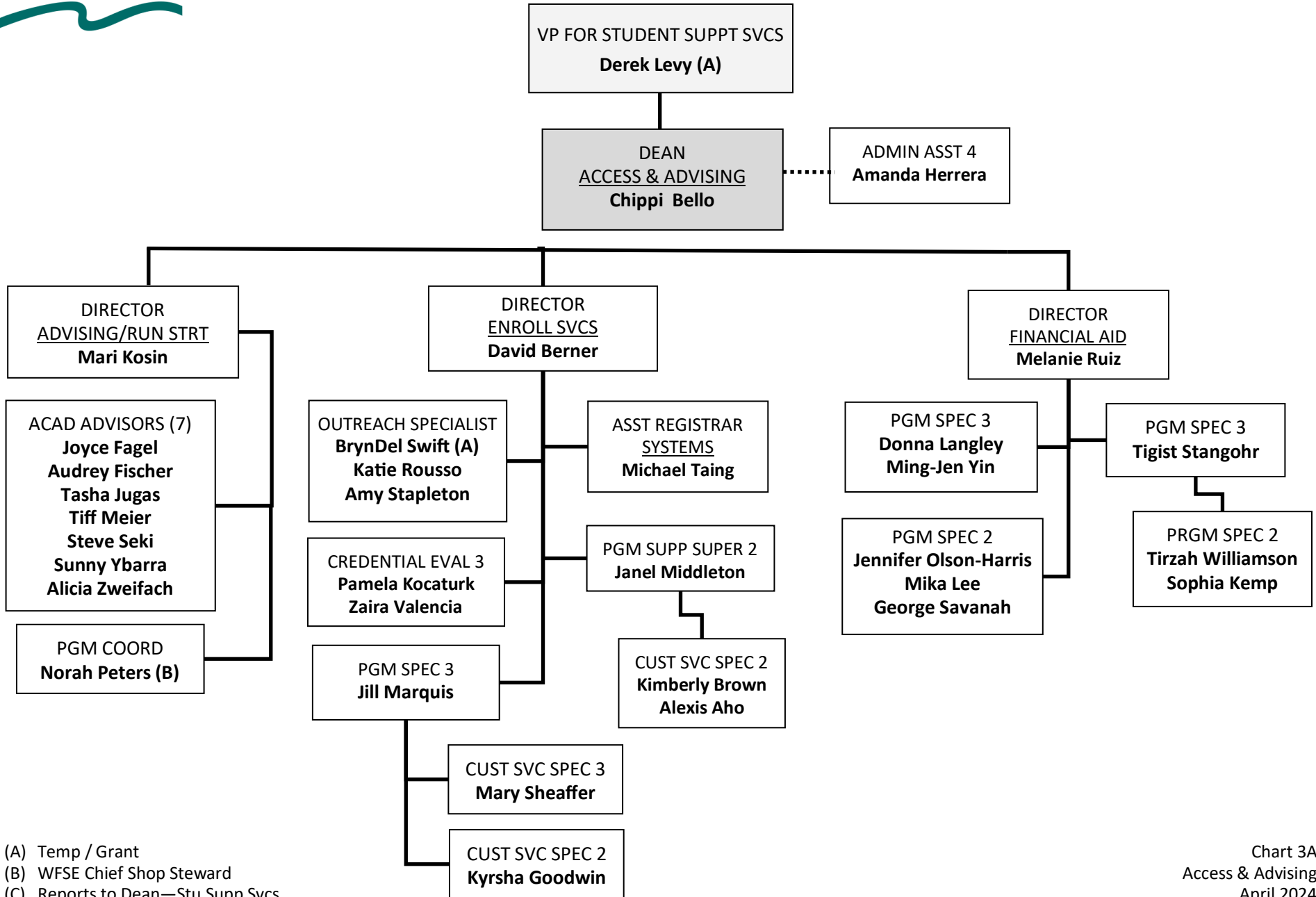
OFFICE OF INSTRUCTION—WORKFORCE EDUCATION



(A) Employment Security Partner
(B) Temp / Grant



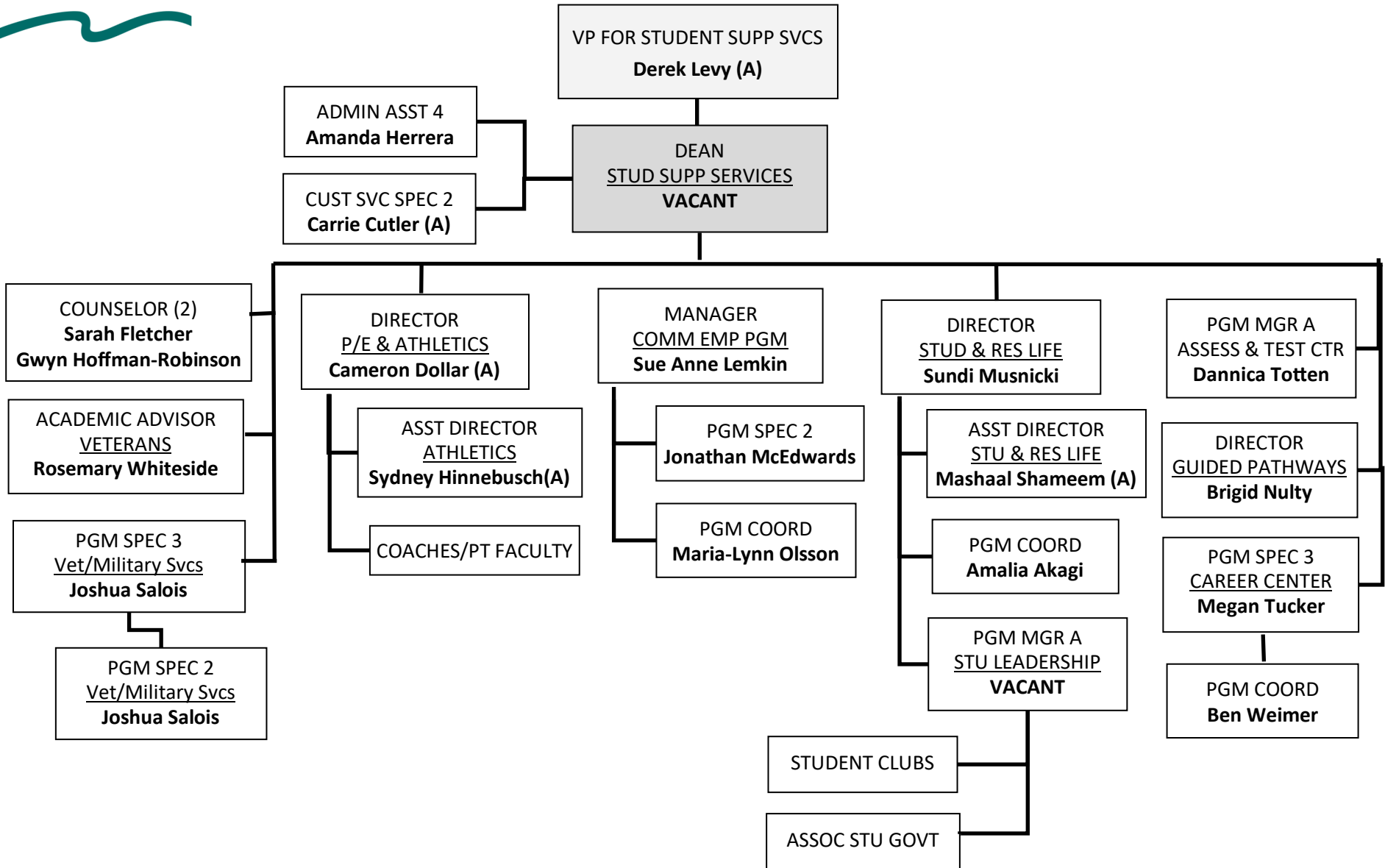
OFFICE OF STUDENT SERVICES—ACCESS & ADVISING



- (A) Temp / Grant
- (B) WFSE Chief Shop Steward
- (C) Reports to Dean—Stu Supp Svcs



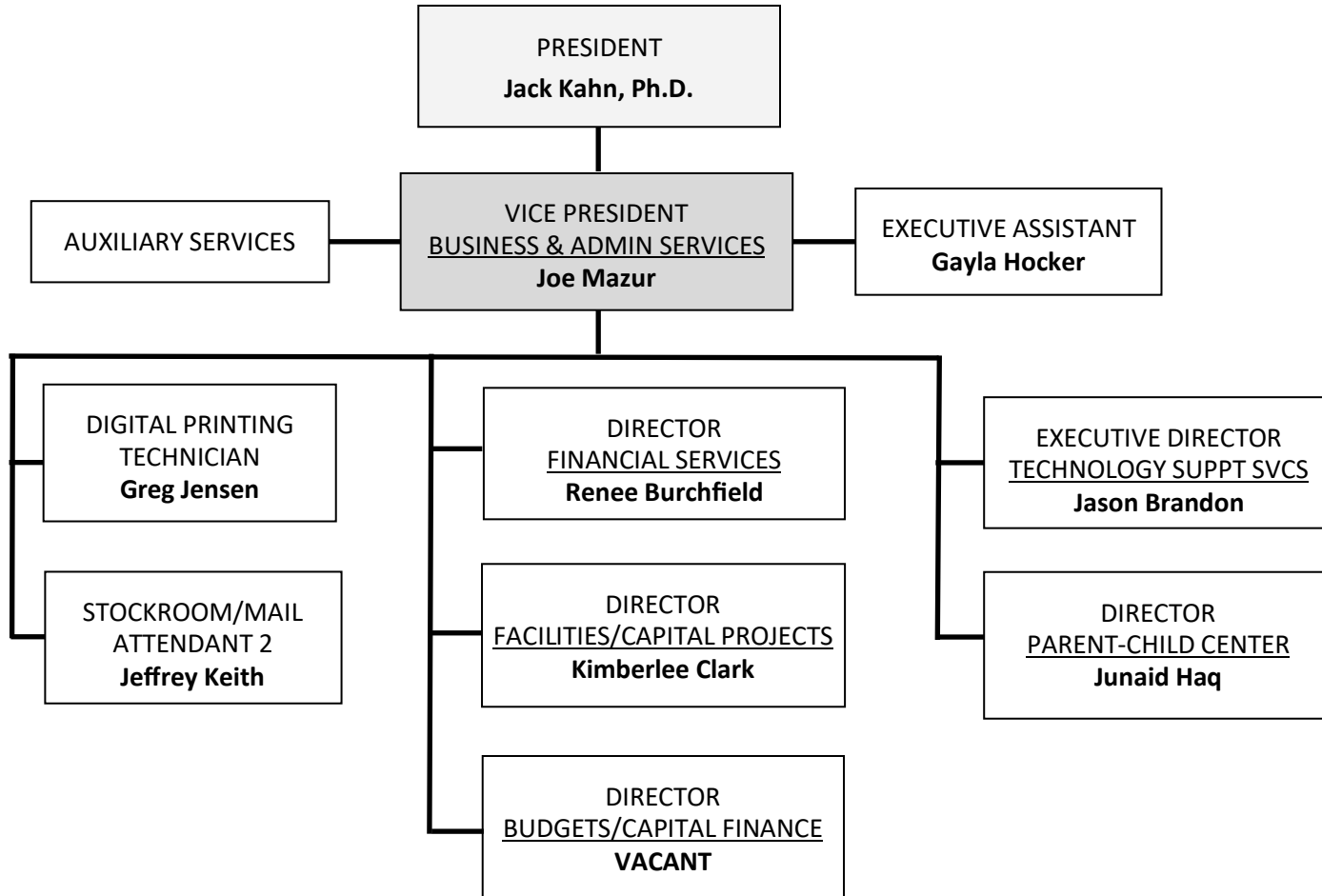
OFFICE OF STUDENT SERVICES — STUDENT SUPPORT SERVICES



(A) Temp / Grant

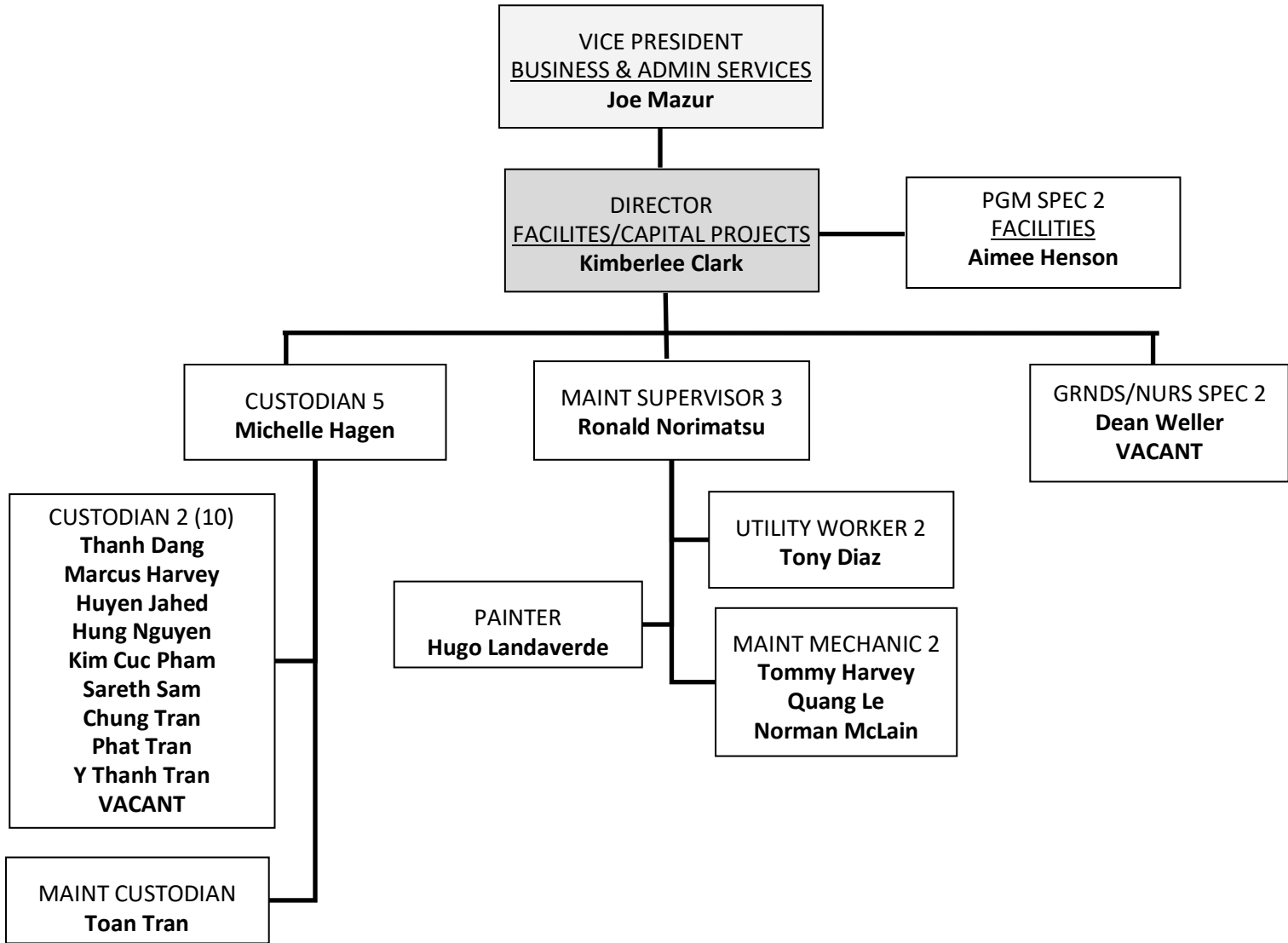


OFFICE OF BUSINESS & ADMINISTRATIVE SERVICES



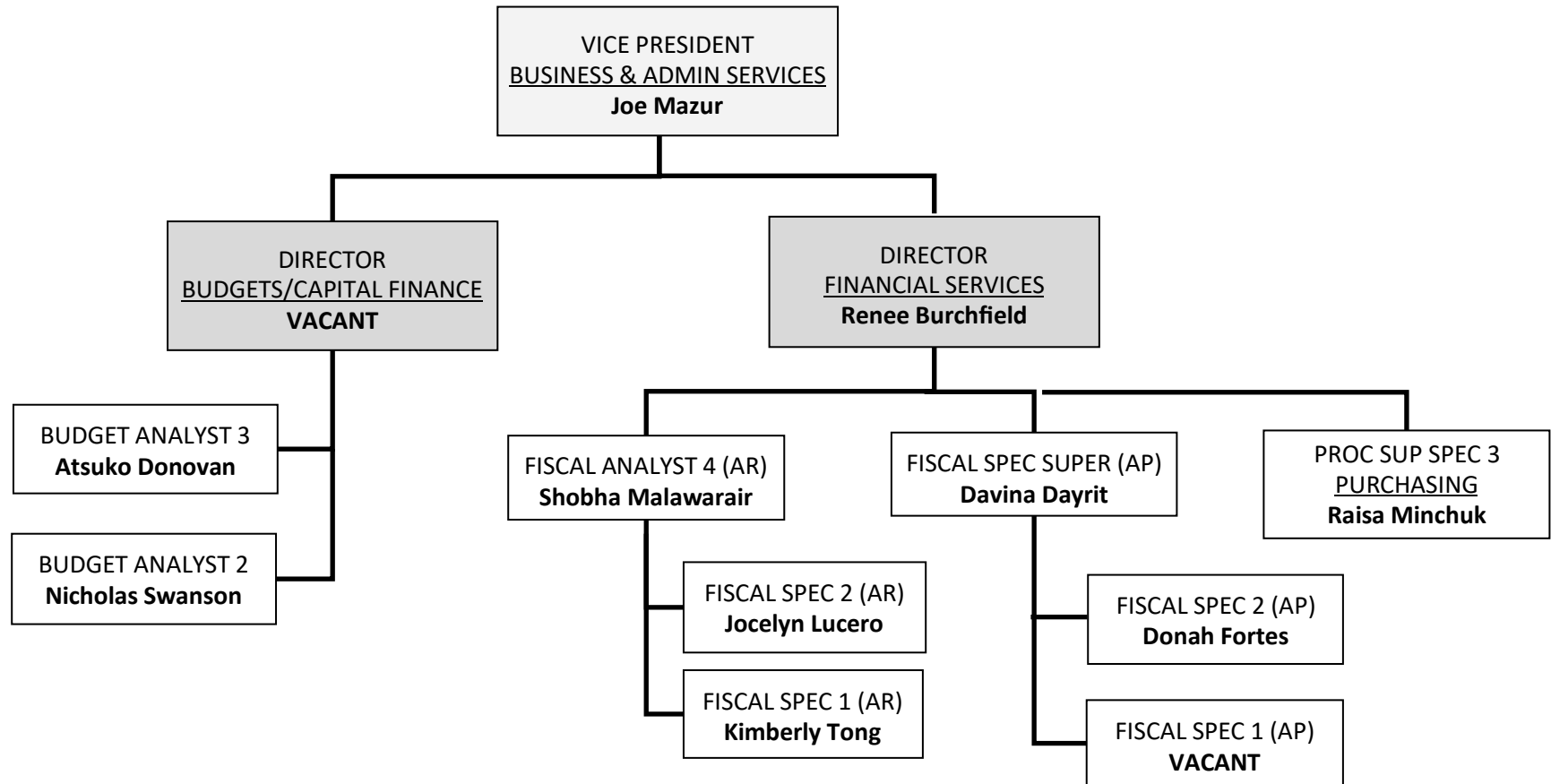


OFFICE OF BUS & ADMIN SVCS—FACILITIES & CAPITAL PROJECTS



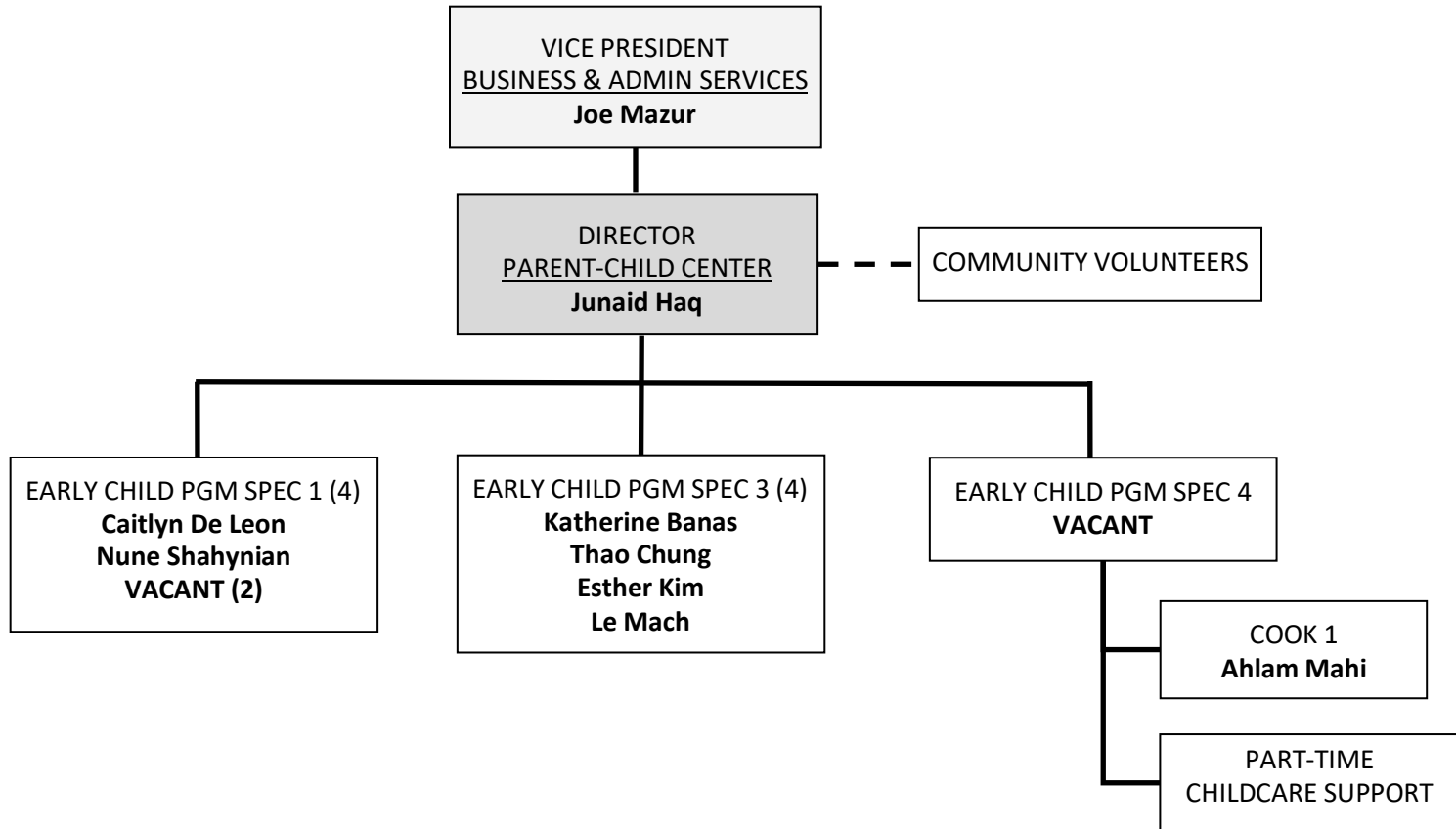


OFFICE OF BUS & ADMIN SVCS—BUDGET & FINANCIAL SERVICES



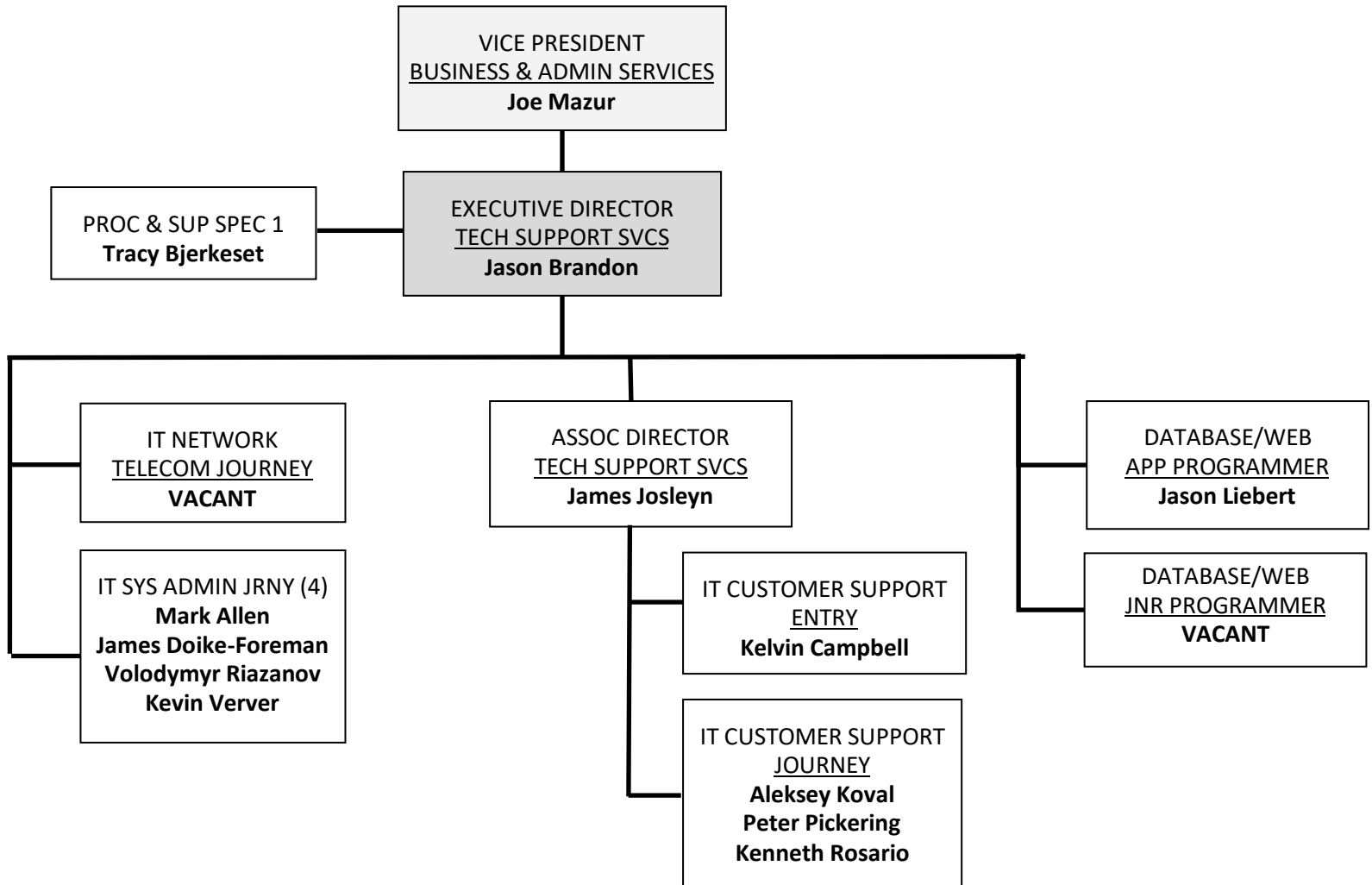


OFFICE OF BUS & ADMIN SVCS—PARENT-CHILD CENTER



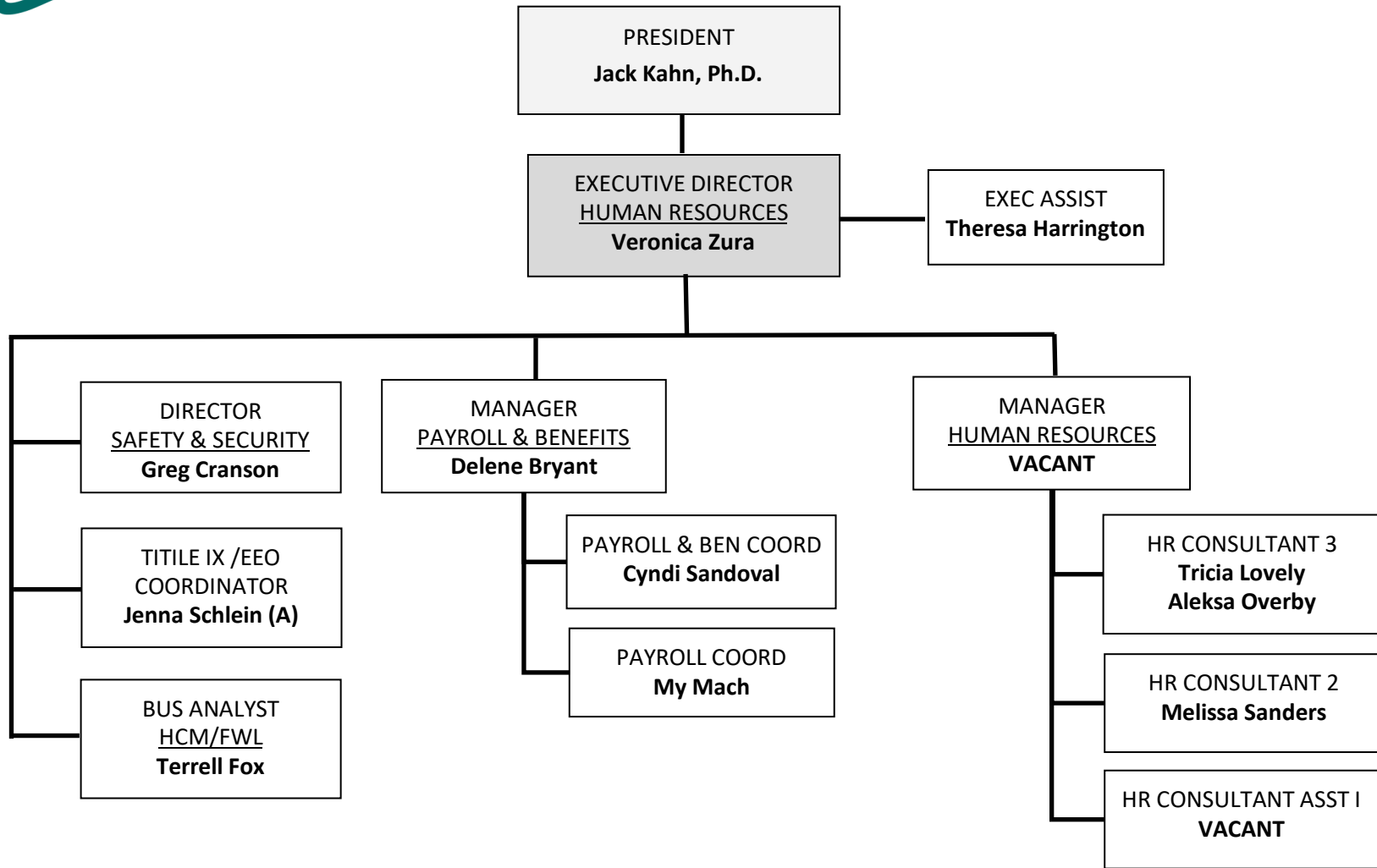


OFFICE OF BUS & ADMIN SVCS—TECHNOLOGY SUPPORT SERVICES





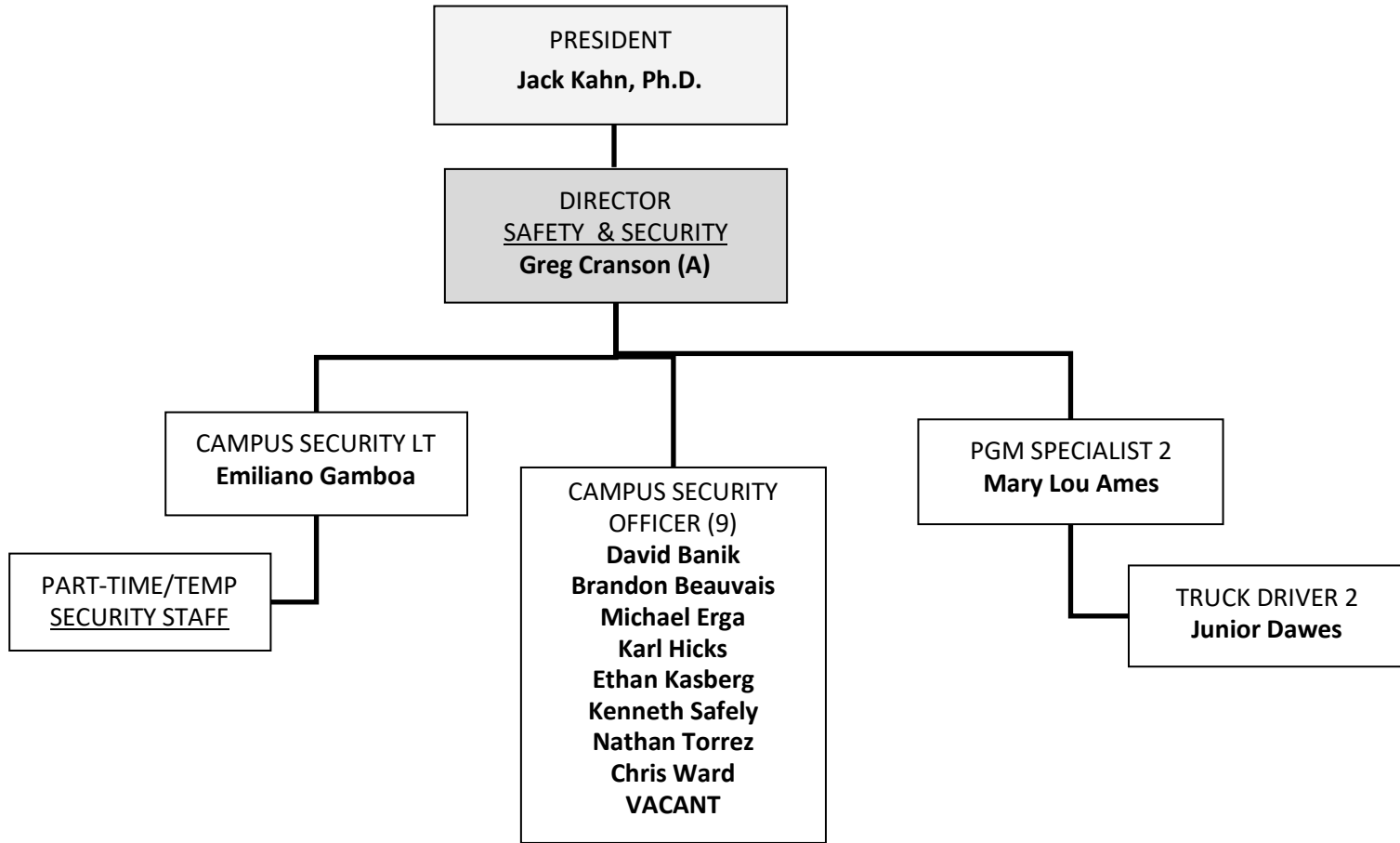
OFFICE OF HUMAN RESOURCES



(A) Temp / Grant

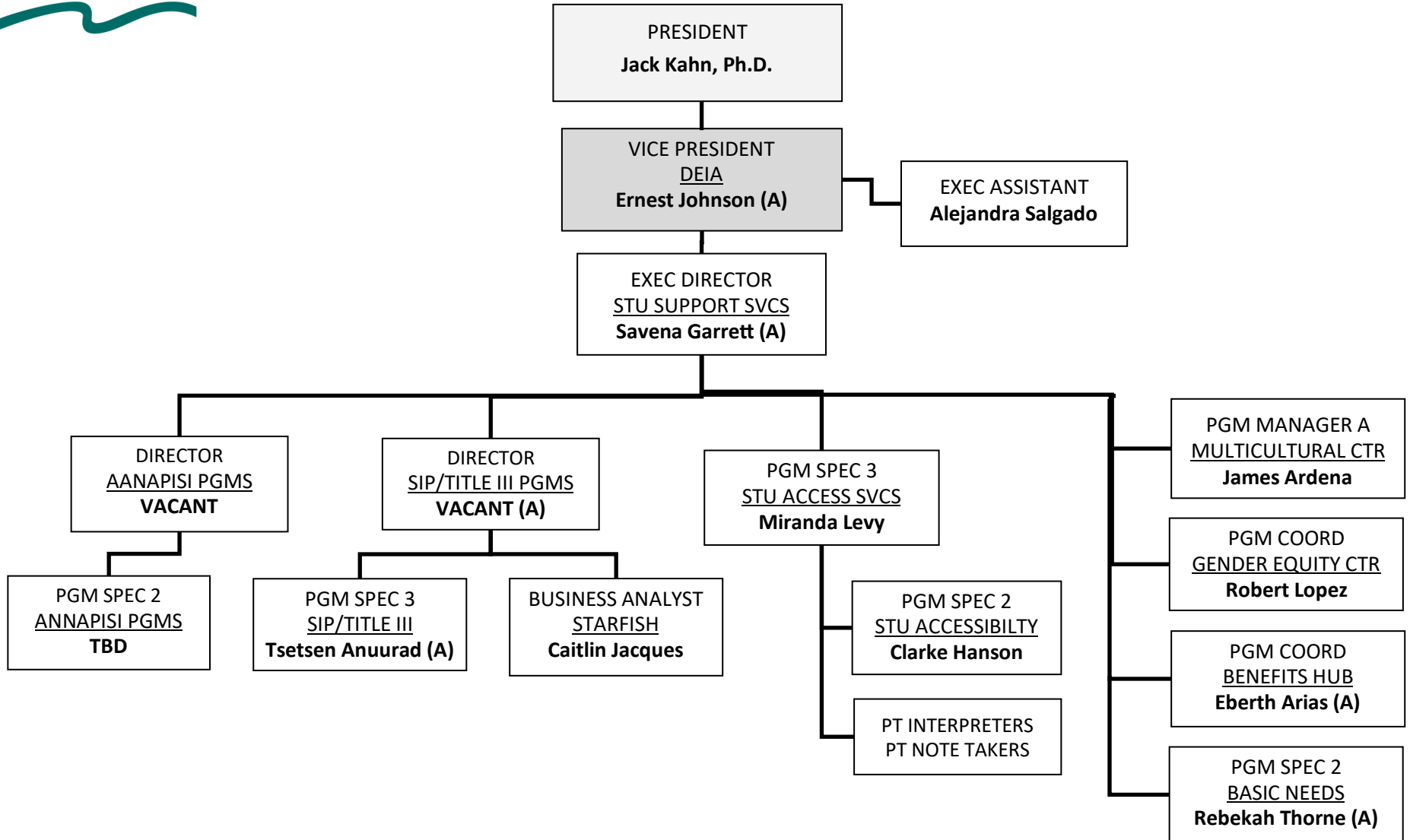


OFFICE OF HUMAN RESOURCES — SAFETY & SECURITY





OFFICE OF DIVERSITY, EQUITY, INCLUSION & ACCESS



(A) Temp / Grant



OFFICE OF STRATEGIC COMMUNICATIONS & MARKETING

