

# SURVIVAL Guide

2023-2024



Shoreline  
COMMUNITY COLLEGE



# WELCOME TO YOUR SURVIVAL GUIDE!

This guide is intended to help connect students to opportunities, activities, and resources available at the college. This year's Survival Guide is fully virtual and interactive. This means that you will be able to navigate through the guide by using the links found in the Table of Contents as well as the "Table of Contents" buttons throughout the guide. In addition, all links included throughout the guide are live and will take you to the web pages and email addresses that will provide you with more information about those topics!



# CONTENTS

## GET INVOLVED

- [Student Life](#)
- [Arts & Entertainment Board](#)
- [Associated Student Government](#)
- [Student Fees](#)
- [7000 Campus Living](#)
- [Student Clubs](#)
- [Intramural & Wellness and Athletics](#)
- [Honors College](#)
- [Study Abroad](#)
- [International Student Leaders](#)
- [International Student Ambassadors](#)
- [Student Ambassadors](#)
- [Get Connected with Social Media](#)

## STUDENT SUPPORT

- [Multicultural Center](#)
- [Student Accessibility Services](#)
- [Veterans & Military Student Services](#)
- [Gender Equity Center](#)
- [WAVES/AANHPI Support](#)
- [Free Menstrual Products](#)
- [Current Student Support Page](#)

## CAMPUS RESOURCES

- [Dental Hygiene Clinic](#)
- [Parent Child Center](#)
- [Benefits Hub](#)
- [Foundation](#)
- [Workforce Education](#)
- [Advising & Running Start](#)
- [Student Learning Center](#)
- [Assessment & Testing Center](#)
- [E-Learning](#)
- [Counseling Center](#)
- [Career Center](#)
- [Ray Howard Library](#)
- [Safety & Security](#)



# STUDENT LIFE

Student Life facilitates a variety of engagement opportunities for students, including large-scale campus events, participation in clubs, and involvement with the Associated Student Government (ASG) and the Arts & Entertainment Board (A&E). Want to get involved on campus? We're here to help!



**Sundi Musnicki**  
Director



**Michaela Gomes**  
Asst. Director



**Amalia Akagi**  
Prog. Coordinator

The Arts & Entertainment Board (A&E) organizes activities and events that promote community and connect students to resources and opportunities on campus.

## A&E



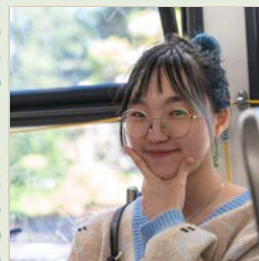
**Hazel**  
Event Coordinator



**Coral**  
Event Coordinator



**Sam**  
Event Coordinator



**Edwina**  
Graphic Designer



**Cherrie**  
Graphic Designer

# ASG

The Associated Student Government (ASG) serves as the representative voice for all current students. ASG members serve on campus committees and advocate for student interests and facilitate opportunities for students to provide feedback about their SCC experience.



**Lina**  
President



**Rachel**  
Vice President



**Jessie**  
Budget & Finance



**Laura**  
Gov. Affairs



**Orpheus**  
Social Justice



**Chris**  
Sustainability



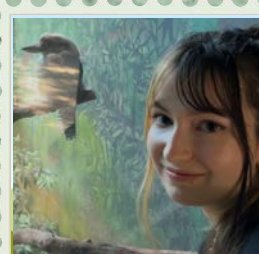
**Issac**  
Club Affairs



**Fiony**  
Communications



**Cheryl**  
Student Rep.



**Natalia**  
Student Rep.



**Abby**  
Student Rep.

# STUDENT FEES

The Associated Student Government (ASG) oversees 3 student fees: the Services & Activities (S&A) Fee, Sustainability & Commuter Options Fee (SCOF), and Student Technology Fee. These fees are administered by student-led committees consisting of ASG members and advised by faculty and staff representatives. Funding from the fees supports a wide variety of services for students, including classroom technology, campus improvements, and extra-curricular activities.

**Services & Activities (S&A) Fee:** Provides support for co-curricular programs including Athletics, Theater, the Ebftide newspaper, Multicultural Center, Benefits Hub, Student Life, and more! Current Fee: \$12 per credit up to 10 credits, \$5.85 per credit for credits 11-15

**Sustainability & Commuter Options Fee (SCOF):** Provides support for socially and ecologically sustainable initiatives including campus shuttles, the campus garden, water bottle refiling stations, and the new HSAMCC building. Current Fee: \$23 per quarter

**Student Technology Fee:** Provides support for technology-related projects such as smart classrooms, laptop loan program, and computer labs. Current Fee: \$4.40 per credit, maximum of \$44 per quarter



# 7000 CAMPUS LIVING

The 7000 building is SCC's substance-free on-campus housing. The community is supported by four Resident Assistants (RAs), who are student employees that help to promote a positive living and learning environment by planning events and providing one-on-one support to students living in the building.



## RESIDENT ASSISTANTS



Meg



Benjamin



Pryanka



Isaac

Follow 7000 on Instagram [@7000campusliving](https://www.instagram.com/7000campusliving) for updates and information about living on-campus!

# STUDENT CLUBS

SCC has dozens of amazing clubs that host engaging activities and provide developmental opportunities for students. Clubs focus on a variety of topics including hobbies, cultures/identities, majors and career paths. Joining a club is a great way to get involved, meet new people, and gain leadership experience! All clubs that register in the fall receive a starting budget of \$500 per year. Students are also invited to start their own club, and Student Life can help!



Student Life supports 40-50 clubs each year that focus on a broad range of topics including major or academics, hobbies, and culture!

To view the full list of active clubs or learn about how to start a new club scan the QR code, go to [https://bit.ly/SCC\\_Clubs](https://bit.ly/SCC_Clubs) or e-mail Student Life at [studentlife@shoreline.edu](mailto:studentlife@shoreline.edu).



Home > Campus Life > Student Life > Student Clubs

## Student Clubs

Shoreline has dozens of amazing clubs that host engaging activities and events for students. Our clubs focus on a variety of topics including hobbies, cultures/identities, and career paths. Joining a club is a great way to get involved, meet new people, and gain leadership experience!

### Join a Club

- To see a list of active clubs for the current academic year, check our [current active clubs list](#). For more information about a specific club, please contact the listed advisor and/or student.
- For more information about Shoreline's clubs, please e-mail [studentlife@shoreline.edu](mailto:studentlife@shoreline.edu).

### Start a New Club

Don't see a club that interests you? It's easy to start one! All SCC students are able to start a new club.

Here's what you need to get started:



# INTRAMURALS & WELLNESS

Each quarter Intramurals & Wellness offer a variety of free activities, including open gym time, fitness center access, and in-person and virtual classes such as yoga and personal training to support a healthy lifestyle. Practice and learn strategies to feel you best, make new friends, and have fun!

Check out the Intramurals website for a list of activities and a current schedule:

Website: <https://www.shoreline.edu/athletics/intramurals.aspx>

Email: [intramurals@shoreline.edu](mailto:intramurals@shoreline.edu)



## ATHLETICS

SCC supports seven intercollegiate sports teams, including women's volleyball, and men's and women's soccer in the fall, men's and women's basketball in the winter, and men's baseball and women's softball in the spring.

Bring your current SCC student ID or ctcLink ID number to all home games and you gain free admission to cheer on the home team as part of Phin Nation.

For more information about athletics including team rosters and schedules:

Website: <https://www.shoreline.edu/athletics/>

# HONORS COLLEGE

The Honors College is a close-knit community of highly motivated students who are earning Associate Degrees for university transfer. Students enjoy learning in a highly engaged learning environment through in-depth discussions and one-on-one support from faculty and peers. Honors College students enroll in designated courses every quarter and have the option to participate in a Research Track option to pursue a year-long research project with a faculty mentor.

For more information about the Honors College:

Website: <https://www.shoreline.edu/honors/>



# STUDY ABROAD

Want to see the world? Studying abroad is the ideal way to broaden your horizons. More than just traveling, studying abroad allows you to dive deep into local cultures and histories with the guidance of experts. And while you're a student, you can use financial aid and apply for scholarships!

During spring break 2024, the college is also offering its first Study Away program - the opportunity for students to follow a part of the Civil Rights, Freedom Riders Trail through Alabama with Shoreline faculty.

For more information about Study Abroad/Away:

Website: <https://www.shoreline.edu/international/study-abroad/default.aspx>

# INT'L STUDENT LEADERS

International Student Leaders (ISLs) are a team of current students who work in the International Education department. The mission of the ISLs is to help international students achieve cross-cultural experiences and academic successes at Shoreline. They hold several events every quarter, which are open to ALL students! Past events include Graduation Prom, Ice Skating, and Game Time (board games).

For more information:

Email: [iestudentleaders@shoreline.edu](mailto:iestudentleaders@shoreline.edu)

Office: PUB 9302



# INT'L STUDENT AMBASSADORS

International Student Ambassadors (ISAs) are current international students supporting the outreach and admissions staff to communicate with prospective students around the world via email or social media.

ISAs also help the International Education office with other marketing and outreach projects, such as giving campus tours to visitors, translating marketing materials, producing promotional graphics and videos, etc.

For more information about International Education:

Facebook: [@SCCinternational](#) or [@shorelineISL](#)

Instagram: [@shoreline\\_international](#)

Discord: <https://discord.com/invite/ZMYEeMvwR>

# STUDENT AMBASSADORS

Student Ambassadors are current Shoreline students who help new (and continuing) students get connected with each other and with campus resources through activities like campus tours, New Student Orientation, answering questions at the welcome desks, and more. Students are welcome to stop by the PUB Welcome Desk and say “hi” to the Student Ambassadors and find out how they can get connected on campus!

For more information about the Student Ambassadors:  
E-mail: [tanuurad@shoreline.edu](mailto:tanuurad@shoreline.edu)



## DID YOU KNOW?

You can connect with a number of offices on social media to find out about available resources and upcoming activities:

### Student Life

 @scc\_studentlife

 SCC Student Life

### Int'l Education

 @shoreline\_international

 Shoreline Community College  
- International

### Multicultural Center

 @multiculturalscc

 Multicultural Center at  
Shoreline Community College

### Ray Howard Library

 @scclibrary

 Shoreline CC Library

### Honors College

 @honorscollegescc

### Career Center

 @careercenter\_scc

### Gender Equity Center

 @genderequityscc

 Shoreline Community College  
Gender Equity Center

### WAVES

 @scc\_waves

## DENTAL HYGIENE CLINIC

The SCC Dental Hygiene Clinic is now located at the University of Washington main campus at 1959 NE Pacific Street, Seattle, WA 98195. Only 20 minutes from SCC's campus!

The non-profit clinic is a partnership with the UW School of Dentistry. Advanced students provide quality care with direct supervision from registered dental hygienists and licensed dentists and offer a range of services at reduced cost. Services include teeth cleaning, fillings, sealants, and x-rays. Together with the UW School of Dentistry, services for urgent care (pain), crowns, bridges, dentures, root canals, and extractions can be scheduled.

For more information and to make an appointment:

Website: <https://www.shoreline.edu/dental-hygiene-dept/dental-services/>

Email: [dhclinic@shoreline.edu](mailto:dhclinic@shoreline.edu)

Phone: 206-546-4711

## PARENT CHILD CENTER

The Parent Child Center (PCC) is the home of SCC's youngest learners. The PCC is a licensed childcare facility and early learning lab located at the college. The center serves SCC students, employees, and community members, and participates in the state's Early Achievers program. Students enrolled in at least 6 credits receive a discounted rate subsidized by student fees. The center also accepts Washington State Child Care subsidies.

To learn more about the Parent Child Center:

Website: <https://www.shoreline.edu/parentchildcenter/default.aspx>

Email: [jhaq@shoreline.edu](mailto:jhaq@shoreline.edu)

Phone: 206-546-4690

# BENEFITS HUB

Balancing work, life, and college isn't easy. That's why the Benefits Hub is here to help with everyday financial tools. The Benefits Hub is supported by a partnership between SCC and the United Way of King County, and is staffed by college and UWKC staff who provide well-rounded support to connect students with campus and community resources.

Services include:

- Housing support
- Access to food
- Reduced bus fare
- Free tax prep help
- Utility bill assistance
- Financial coaching
- FAFSA/WASFA application assistance
- Emergency financial grants
- Help paying for groceries
- Healthcare enrollment
- Connection to additional community resources

For more information:

Website: <https://www.uwkc.org/benefitshub/>

Email: [benefitshub@shoreline.edu](mailto:benefitshub@shoreline.edu)

Phone: 206-546-5845



# SCC FOUNDATION

The Foundation is a non-profit organization that works with donors to support the mission, students, and programs of the college through the offering of need and merit-based scholarships that can cover the cost of tuition, books, and tools. The Foundation also works with partners like the United Way of King County to provide financial assistance to SCC students who are navigating financial hardship that has impacted their academic success.

To learn more about the SCC Foundation:

Website: <https://www.shoreline.edu/foundation/scholarships.aspx>



# WORKFORCE EDUCATION

Workforce Education has four funding programs that may be able to help you complete your education: BFET, Opportunity Grant, WorkFirst, and Worker Retraining.

- Coverage for Tuition and fees
- Money for books, transportation, and school supplies
- Personal one-on-one support and advising to help you figure out the best path to meet your goals

Workforce funding is available to domestic students enrolled in a professional/technical program or pursuing a transfer degree while receiving basic food benefits. In addition, students must meet one of the following criteria:

- Meet low-income standards
- Currently unemployed or under-employed.
- Receive TANF/Cash Assistance from DSHS

For more information about Workforce:

Website: <https://www.shoreline.edu/workforce/>

Phone: 206-546-5882

Email [workforce@shoreline.edu](mailto:workforce@shoreline.edu)



## DID YOU KNOW?

The PUB Game Room is NOW OPEN! Stop by Monday-Friday from 10am-4pm to hang out and play:

- Nintendo Switch
- Pool
- Ping Pong
- Board Games
- Foosball

Gaming equipment is available for check-out from Student Life (PUB 9301).

# ADVISING & RUNNING START

Advising is a process based on a close student-advisor relationship intended to help students achieve their educational, career and personal goals through the use of the college and community resources.

An Advisor can help students:

- Make a plan to complete degree or certificate requirement
- Register for classes for next quarter
- Explore career options and select an academic path
- Navigate your college experience and connect to resources
- Learn about transferring to a 4-year college or university

For domestic students advising:

Email: [advising@shoreline.edu](mailto:advising@shoreline.edu) or [runningstart@shoreline.edu](mailto:runningstart@shoreline.edu)

Phone: 206-546-4559

For international student advising:

Email: [international@shoreline.edu](mailto:international@shoreline.edu)

Phone: 206-546-4697

## STUDENT LEARNING CENTER

The Student Learning Center provides free tutoring for ALL Shoreline Community College students! There are two easy ways to find a tutor: You can **SCHEDULE AN APPOINTMENT** on Starfish or simply **DROP BY** one of our tutoring centers in the Library:

- Math & Sciences Learning Center - 4213
- The Writing Studio - 4310

For more information about Student Learning Center services:

Website: <http://www.shoreline.edu/tutoring>

E-mail: [SLC@shoreline.edu](mailto:SLC@shoreline.edu).



# ASSESSMENT & TESTING CENTER

The Testing Center provides placement testing for SCC students. Directed Self Placement (DSP) for English and ALEKS Math Assessment may be taken online at home.

To find out if placement testing is required for your course or major, go to <https://www.shoreline.edu//placement/>.

For more information about the Testing Center including hours:

Website: <https://www.shoreline.edu//testingcenter/default.aspx>

Email: [testcenter@shoreline.edu](mailto:testcenter@shoreline.edu)

Phone: 206-546-4608

Office: FOSS 5100

# E-LEARNING & SUPPORT CENTER

eLearning Services helps students to understand and use classroom technology whether they are enrolled in online, hybrid, or in-person classes. Canvas is an online tool used to support SCC's online, hybrid, and web-enhanced classes. Instructors will use Canvas to post course content including syllabi, homework assignments, links to articles, and grades.

For assistance with Canvas and other classroom technology:

E-mail: [support@shoreline.edu](mailto:support@shoreline.edu)

The Shoreline Support Center is the place to ask for help from several areas on campus including Technology Support Services (TSS) and eLearning Services. Visit the Knowledge Base to search for basic information, how-to guides, or training resources. You can also submit a request for assistance or to report a problem.

To access the Support Center, go to

<https://support.shoreline.edu/TDClient/141/Portal/Home>.

# COUNSELING CENTER

The Counseling Center provides free, confidential counseling services, resources, and guided on and off-campus referrals. Licensed counselors are available to support the academic and personal success, health, and well-being of our students and campus community.

Students often visit the Counseling Center to discuss a variety of topics such as:

- Depression
- Anxiety
- Relationship concerns
- Stress management
- Indecision about a career path
- Failing grades
- Time management
- Struggling with a subject
- Managing a learning disability

Counselors also support students who may be feeling suicidal or in crisis. The Counseling Center currently offers sessions in-person and online using a confidential telehealth platform called Simple Practice.

For more information about the Counseling Center and to schedule an appointment:

Office: FOSS 5251

Phone: 206-546-4594

Website: <https://www.shoreline.edu/counseling-center/>

The Counseling Center also houses the lactation lounge to serve the needs of nursing parents.



# CAREER CENTER

The Career Center is available for all current students, alumni, and members of the community to receive assistance with career planning and job preparation.

Available services include:

- Articulating your interests and aligning them with occupations and career paths you can pursue
- Linking your interests with Shoreline degrees and certificates that can help you reach your goals
- Finding and applying for internships and jobs
- Creating and updating resumes and cover letters
- Networking and interview preparation and practice
- Connecting you to local resources, including WorkSource



**PathwayU:** User-friendly website that guides you through informal assessments to identify potential career and educational paths that overlap with your interests and values. To access this tool, go to <https://shoreline.pathwayu.com/>.



**Handshake:** A student focused career platform, built to help you discover and land jobs and internship opportunities. Activate your account for access to the #1 way college students find their next role. To learn more, go to <https://app.joinhandshake.com/stu>.

To learn more about the Career Center:

**Website:** <https://www.shoreline.edu/job-career-services/career-center/>

**LinkedIn:** <https://www.linkedin.com/company/career-center-shoreline-community-college/>

**E-mail:** [careercenter@shoreline.edu](mailto:careercenter@shoreline.edu)

**Office:** PUB 9203

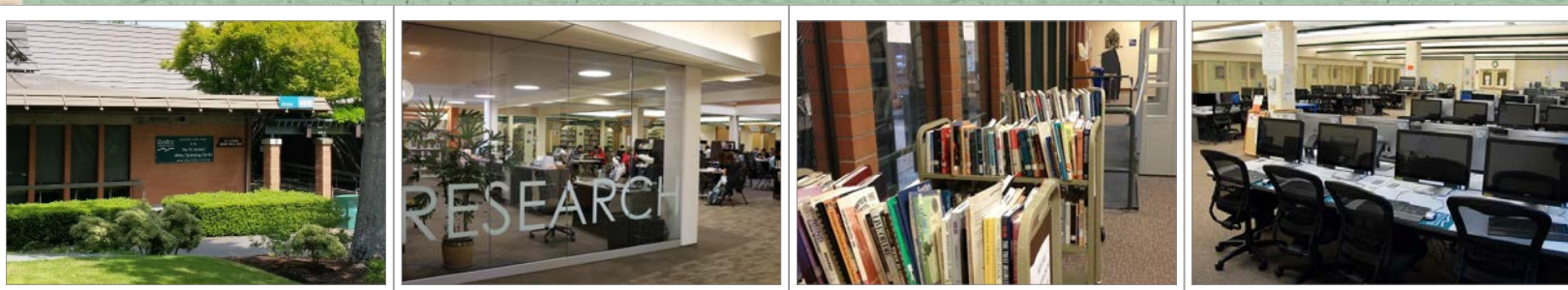
# RAY HOWARD LIBRARY

A world of knowledge is right at your finger tips at the Ray Howard Library. Located in the 4000 building, students can stop by and study, engage in group work, check out materials, and get in-person help from a team of helpful experts.

**Research Desk:** Librarians can help students find a particular book or film, use library resources, cite sources, and place special requests for off-campus materials. The research desk is available online 24 hours a day, or students can make an appointment with a librarian or e-mail library staff at [library@shoreline.edu](mailto:library@shoreline.edu).

**Scans of Book Chapters:** The library can e-mail you one chapter of a book that is available on-site. Students can e-mail [circulation@shoreline.edu](mailto:circulation@shoreline.edu) with the name of the book, author, edition/year, and the pages or chapter number that is needed.

**Online Access:** Students have access to millions of online articles, e-books, and streaming films. There are specialty databases that can help students find information that typically costs money.



For information about library services and hours:

Website: <https://shoreline.libguides.com/home>

Instagram: @scclibrary

Facebook: @shorelinecclibrary

# SAFETY & SECURITY

Campus Security has uniformed personnel on campus and on duty 24 hours a day, 365 days a year to promote a safe and productive learning environment for students, faculty, and staff. Campus Security works closely with local law enforcement and the fire department, and is trained and equipped to respond to both medical and safety-related emergencies.

Campus Security provides numerous other services to the campus community:

- Vehicle assists (jump starts and lockouts)
- Safety escorts (on/around campus)
- Medical non-emergency response
- Vehicle accidents (major and minor)
- Investigating reported suspicious activity
- Immediate safety issues (fires, fallen trees, parking lot flooding, etc.)
- Parking enforcement

To contact Campus Security:

Phone: 206-235-5860 (on-call officer) or 206-546-4633 (office)

Website: <https://shoreline.oudeve.com/safetyandsecurity/default.aspx>

E-mail: [safetyandsecurity@shoreline.edu](mailto:safetyandsecurity@shoreline.edu)



# MULTICULTURAL CENTER

The Multicultural Center helps to promote a climate of inclusion, social justice, equity, and access for underserved students and develops programs that support student success and transforms the college community. The center offers lectures, workshops, and special events that are designed to help students develop and enhance their multicultural awareness, knowledge, and skills.

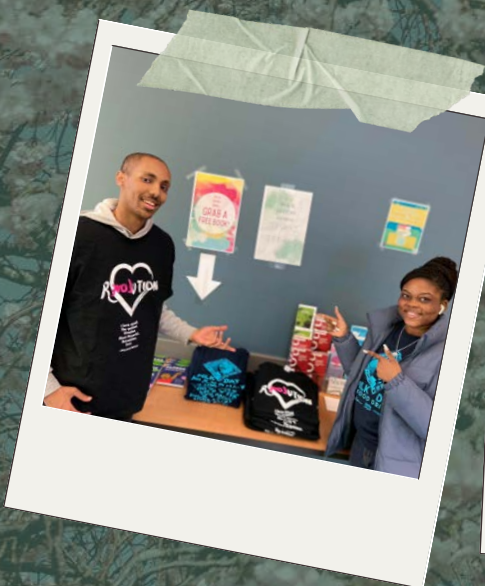
Past events include the Students of Color Conference, Shoreline Brother of Color events, affinity group snack n' chats, as well as the annual Martin Luther King, Jr. recognition and Multicultural Weeks.

The Multicultural Center works one on one with students to facilitate their success at the college, including providing short-term loans and connecting them with resources and opportunities on and off-campus.

To learn more about the center:

Website: <https://www.shoreline.edu/multicultural/>

Facebook: @ShorelineMulticultural



# STUDENT ACCESSIBILITY SERVICES

Students with disabilities may be eligible to receive reasonable accommodations or modifications to assist them in pursuing their academic goals while at the college. State and federal law, as well as college policy, prohibit discrimination of students on the basis of learning, physical, and psychiatric disabilities. Student Accessibility Services (SAS) is dedicated to assisting each individual student.

For more information about available services and resources:

Website: <https://www.shoreline.edu/oss/students-with-disabilities/>

E-mail: [sas@shoreline.edu](mailto:sas@shoreline.edu)

Phone: 206-546-4545



## VETERANS & MILITARY STU. SERVICES

Veteran & Military Student Services (VMSS) provides support to veterans and military-connected students by offering support, mentorship, and community through the Veterans Resource Center (VRC), a space for students to socialize and decompress as they transition from military to college life. VMSS staff can help with academic advising and connections to on-campus and community resources.

Other services offered include:

- Priority registration for active duty, reserve members, veterans, and eligible family members
- Help navigating GI benefits
- Transcript evaluation

To learn more about VMSS:

Website: <https://shoreline.oudeve.com/oss/veterans/default.aspx>

E-mail: [militaryservices@shoreline.edu](mailto:militaryservices@shoreline.edu)

Office: FOSS 5226

# GENDER EQUITY CENTER

The Gender Equity Center (GEC) provides a safe and affirming space for students across the gender and sexuality spectrum as well as sexual health resources for all students. They work to actively dismantle patriarchal norms and challenge oppressive ideologies against women, transgender and gender-nonconforming people.

- Free Sexual Health Supplies - pick up free condoms, lube, dental dams, pregnancy tests, pads, and tampons.
- Weekly Events - drop in for Q-Collective (for LGBTQIA student and allies), QTPOC (for queer trans people of color) or HEART (tabletop roleplaying).
- Annual Pride Events - celebrate National Coming Out Day, International Women's Day, and a Pride Celebration on campus in June.
- Lavender Graduation Ceremony- get special recognition for your achievements at SCC as an LGBTQ+ student or ally.
- Community Building - make new friends at a self-defense class, movie night, or open mic
- Resources and referrals - find educational resources or referrals for services around gender identity and sexuality.

For more information about the Gender Equity Center:

Website: [www.shoreline.edu/gender-equity-center](http://www.shoreline.edu/gender-equity-center)

E-mail: [genderequity@shoreline.edu](mailto:genderequity@shoreline.edu)

Instagram: [@genderequitySCC](https://www.instagram.com/genderequitySCC)

Discord: [@genderequitycenterscc](https://discord.com/genderequitycenterscc)

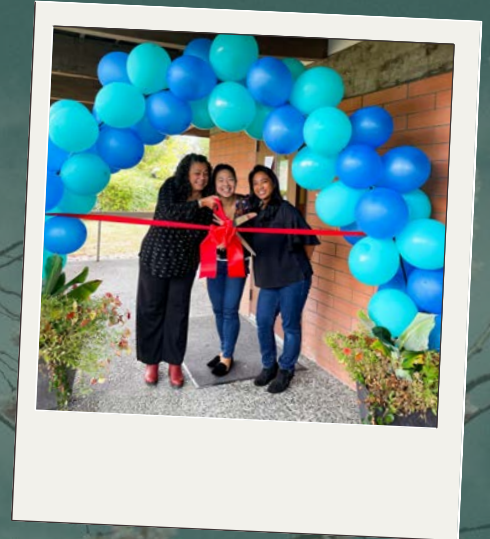
Office: PUB 9202





# WAVES / AANHPI SUPPORT

WAVES (Worthy of Achievement, Validation, Empowerment, and Success) is a support program for domestic Asian American, Native Hawaiian, Pacific Islander (AANHPI) students at Shoreline Community College. WAVES centers retention strategies needed for success throughout students' identity development and empowerment in community college. At the heart of the program, WAVES aims to increase academic support by stabilizing students in the community as it guides its students on a clear pathway to success.



We provide the following services and benefits to our WAVES students:

- AANHPI designated support staff available to help you navigate academics, financial aid, and campus life
- AANHPI Affinity College 101 course that explores non-traditional college success strategies
- Quarterly workshops and events on culture, mental health, and financial wellness
- WAVES Revival Wardrobe is our community care spot for students to pick up gently used clothing and other donations
- Peer tutors who specialize in Math and Writing (Schedule an appointment through Starfish)
- Navigation and referral to college and community resources
- A home base to have club meetings, hang out, and meet with your friends!

To learn more about WAVES:

Website: <https://www.shoreline.edu/asian-and-pacific-islander-student-center>

E-mail [api@shoreline.edu](mailto:api@shoreline.edu)

Phone: 206-533-6661

Instagram: @scc\_waves

Office: 1305

# FREE MENSTRUAL PRODUCTS

Free menstrual products are available to students and staff in restrooms and offices listed below:

- Benefits Hub - PUB 9102
- Center for Education & Career Opportunities (CECO) - FOSS 5101
- Counseling Center - FOSS 5251
- Gender Equity Center - PUB 9202
- Library - 4000

## CURRENT STUDENTS

Available via a link at the top of every shoreline.edu webpage, the Current Students page is a one-stop shop to all the key information and links students need during their time at the college. The page links to services across campus, as well as a built-in calendar, that will help students find information about any resource, event, or activity that they are interested in.

Planning courses, registering for classes, and paying for tuition every quarter is a breeze with the Registration & Payment section.

Get involved and stay connected to all SCC events and happenings with links to club information, intramural & wellness activities, the campus events calendar, and more!

Check out the Current Students page by scanning the QR code or going to [https://bit.ly/SCC\\_CurrentStudents](https://bit.ly/SCC_CurrentStudents).

