

**SHORELINE COMMUNITY COLLEGE  
DISTRICT NUMBER SEVEN  
BOARD OF TRUSTEES  
REGULAR MEETING OF MAY 22, 2013**

**TAB 3**

**REPORT**

**Subject: BOARD MONITORING REPORT (May 2013)**

Attachment

Board Monitoring Report (BMR)—I-BEST Programs/Enrollment

Prepared by: William Sperling  
Director: ESL/ABE/GED & I-BEST  
Shoreline Community College  
May 17, 2013

# Integrated Basic Education & Skills Training (I-BEST) at Shoreline.

## Automotive General (An I-BEST Program)



Receive your certificate in just 3 quarters.

### First Quarter Classes.

- Shop safety & tool use
- Vehicle maintenance
- Engine fundamentals & control
- Electrical fundamentals

### This Program

- Auto
- Entry
- English
- Employment

### Second Quarter Classes.

- Brakes systems service
- Suspension & alignment
- Transmission & drive train
- Heating & air conditioning

### Third Quarter Classes.

- Work in an entry level automotive position.

## CNC Machinist (An I-BEST Program)



Receive your certificate in just 3 quarters.

### In this program, you will learn:

- MFG 113, Basic Manufacturing
- MFG 115, CNC Fundamentals
- MFG 120, CNC Application

Classes are Monday through Thursday 4pm to 10pm



TAKING APPLICATIONS FOR THE NEXT SESSION NOW!

## Office Technology Certificate (An I-BEST Certificate Program)



Receive your college certificate in just 3 quarters.

### First Quarter Classes.

- 9 a.m. - 1:05 p.m., M-Th
- Beginning Keyboarding ..... 3 credits
- Human Relations ..... 3 credits
- Excel 2010 ..... 3 credits
- English for the Office (I-BEST students only) ..... 3 credits

Total College Credits ..... 12

### Second Quarter Classes.

- 9 a.m. - 1:05 p.m., M-Th
- Speed Keyboarding I ..... 3 credits
- Word 2010 Level I ..... 3 credits
- Filing ..... 2 credits
- English Communication ..... 0 credits

Total College Credits ..... 12

### Third Quarter Classes.

- 9 a.m. - 12:05 p.m., M-Th
- Speed Keyboarding I ..... 3 credits
- Office Procedures I ..... 3 credits
- Internship ..... 2 credits
- English Communication ..... 3 credits

Total College Credits ..... 18

### This Program

- Basic skill
- technology
- 34 college
- Technolo
- A short tr

### Financial:

For more in 206-535-6161 206-546-695

This program over 220. Enc at level 5 or 6 quarter with

TAKING NEXT SE



## Nursing Assistant



Receive your certificate in just 1 quarter!

### Class Schedule (11 weeks)

8:30am - 1:30pm  
MTWTF

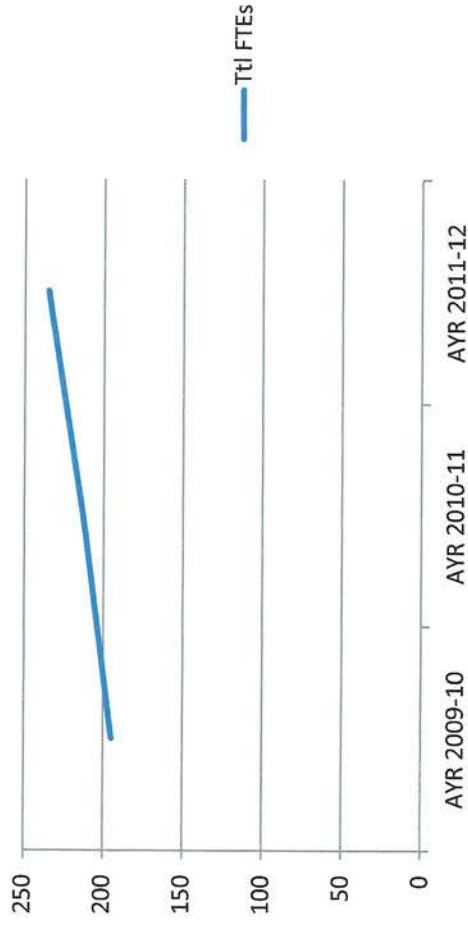
Required Lab Class & Clinical Externship Scheduled outside of above times.

Along with the NAC Certification of Completion, program graduates will also receive the following certificates:

- Dementia for Caregivers
- Fundamentals of Caregiving
- Observation and Documentation
- Mental Health Certificate
- First Aid/CPR
- HIV/AIDS
- Nurse Delegation Basics
- Nurse Delegation Special Focus Diabetes.

TAKING APPLICATIONS FOR THE NEXT SESSION NOW!

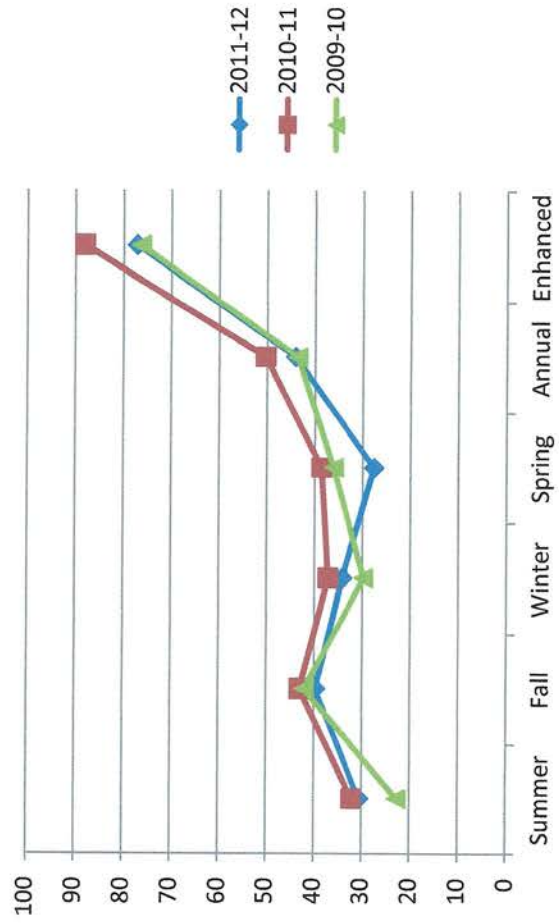
### SCC I-BEST FTEs AYR 2010 - 2012



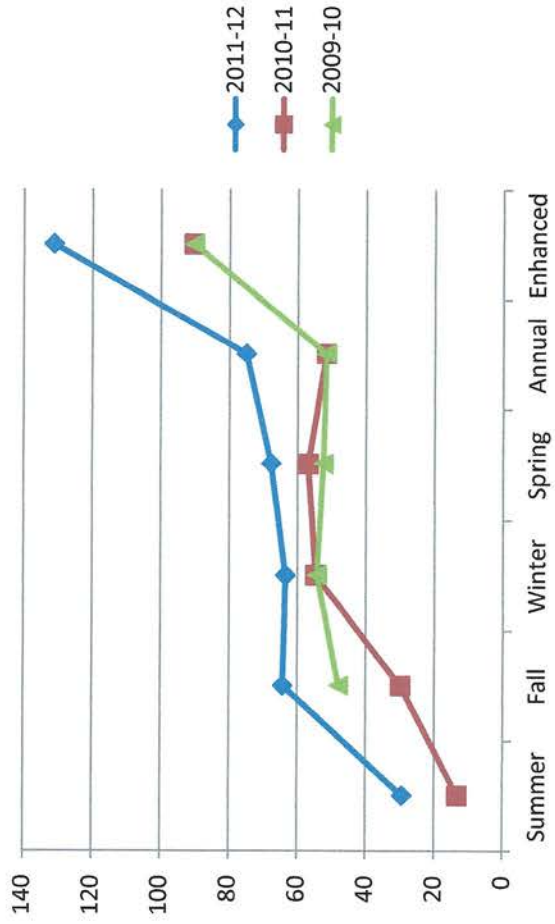
### FY 2012 Top Five I-BEST Schools by Annual FTE

Shoreline C.C.	235
Peninsula College	140
Renton Technical	120
Lower Columbia	99
Clover Park	92

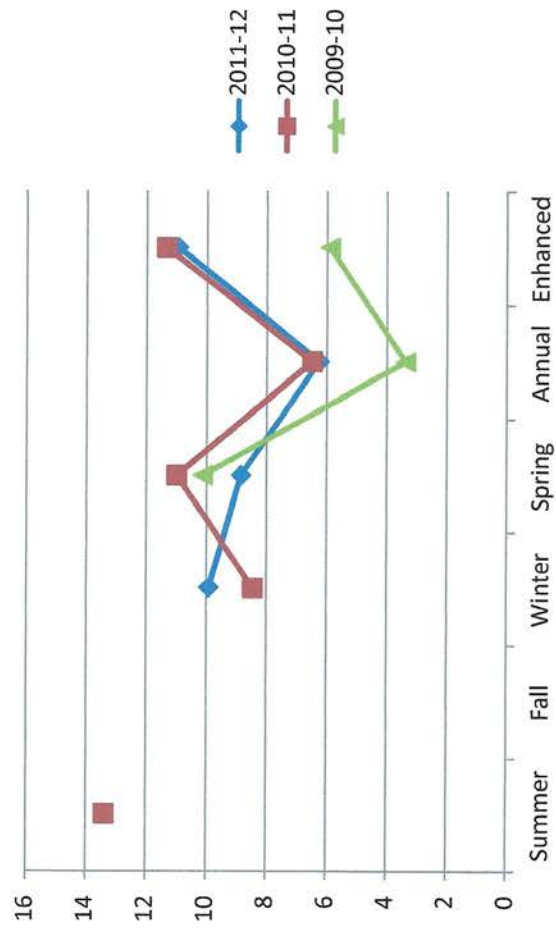
## General Service Technician FTE Enrollment 2009 - 12



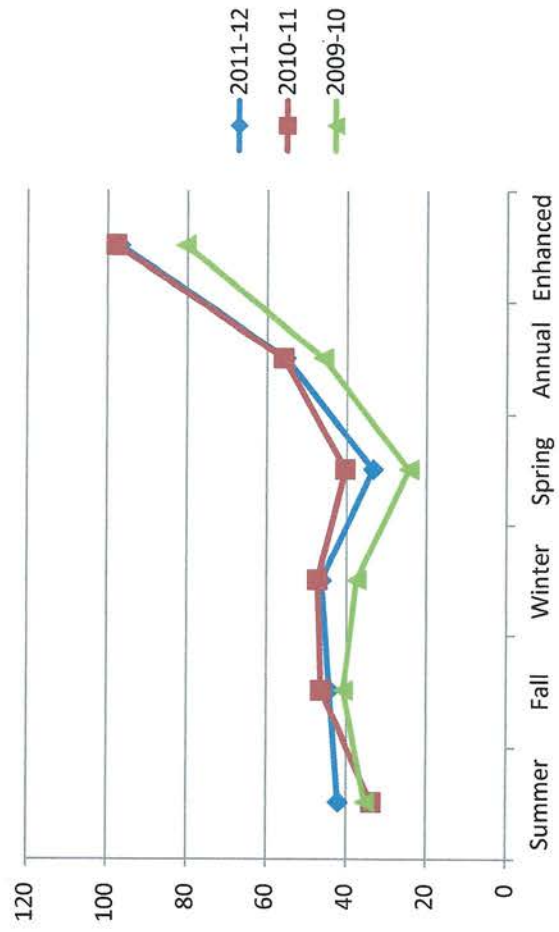
### CNC Machining FTE Enrollment (2 cohorts) AY 2009 - 12



## Office Assistant FTE Enrollment 2009-2012



## Nursing Assistant Certified FTE Enrollment 2009-2012



## **Dramatic Results of I-BEST in Washington State**

**I-BEST Students outperform similar students in traditional basic skills programs. They are:**

- 3 times more likely to earn college level credits
- 9 times more likely to earn a workforce credential
- Employed at double the hours per week
- Earn an average of \$2,310 more per year



## **Cost Benefit to Students and Society**

I-BEST completers gain annual return on investment of 12.4%

Total student costs	\$18,614
Benefits to student completers	\$79,833
ROI	329%
Pay back period in years	8.1

## **Cost Benefit to Students and Society**

Financial benefits to taxpayers are equal to traditional investments based on higher tax receipts and lower social costs.

Cost to state taxpayers per student	\$7,279
Total lifetime taxpayer benefit	\$10,374
ROI	42.5%
Pay back period in years	24.2