

**SHORELINE COMMUNITY COLLEGE  
DISTRICT NUMBER SEVEN  
BOARD OF TRUSTEES  
REGULAR MEETING OF APRIL 23, 2014**

**TAB 2**

**REPORT**

**Subject: Institutional Assessment**

**Attachments**

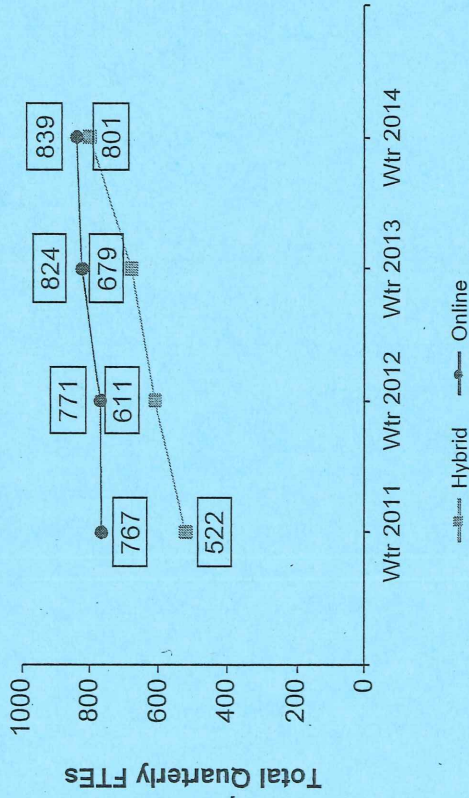
- Winter (Wtr) Quarterly Total Enrollment (FTEs) Comparisons (QENR) (Blue Sheets)
- Spring (Spr) Quarterly Total Enrollment (FTEs) Comparisons (QENR) (Green Sheets)

Prepared by: Bayta Maring  
Director of Institutional Research  
Shoreline Community College  
April 21, 2014

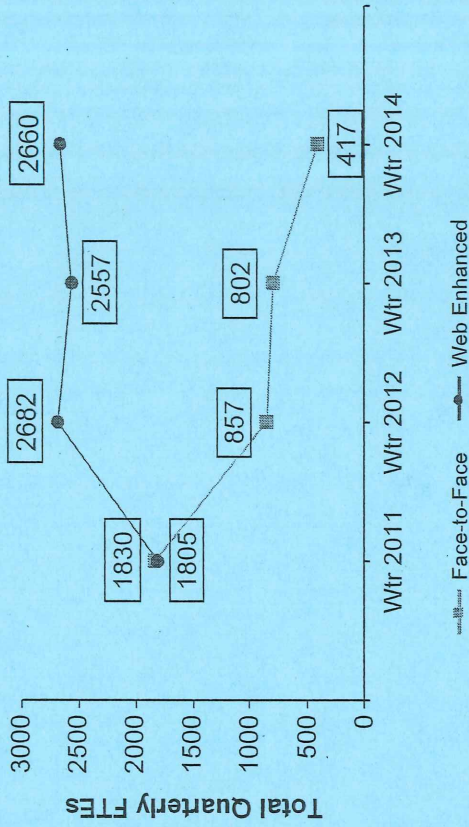


# Quarterly Total Enrollment (FTEs) Comparisons (QENR)

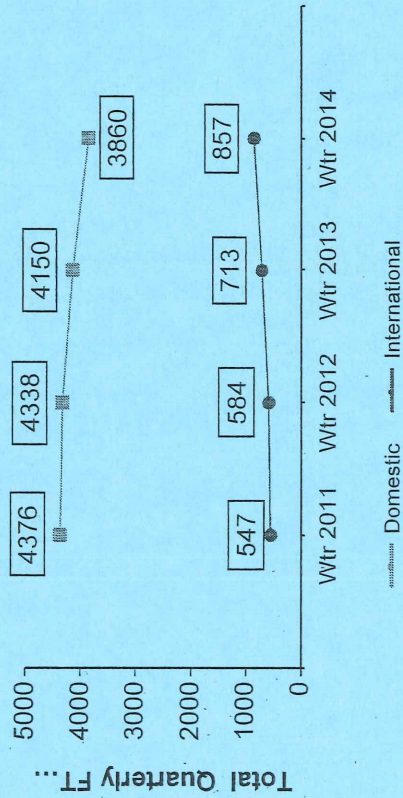
## eLearning - Online and Hybrid



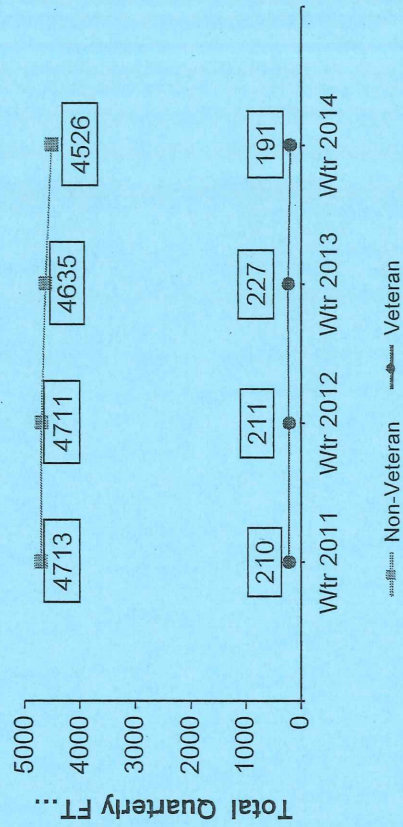
## eLearning - Face-to-face or Other Online and Web Enhanced



## International and Domestic



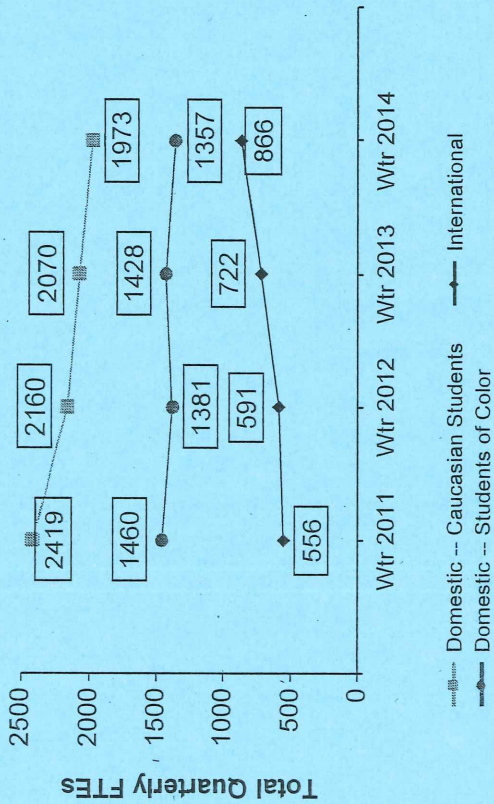
## Veteran and Non-Veteran



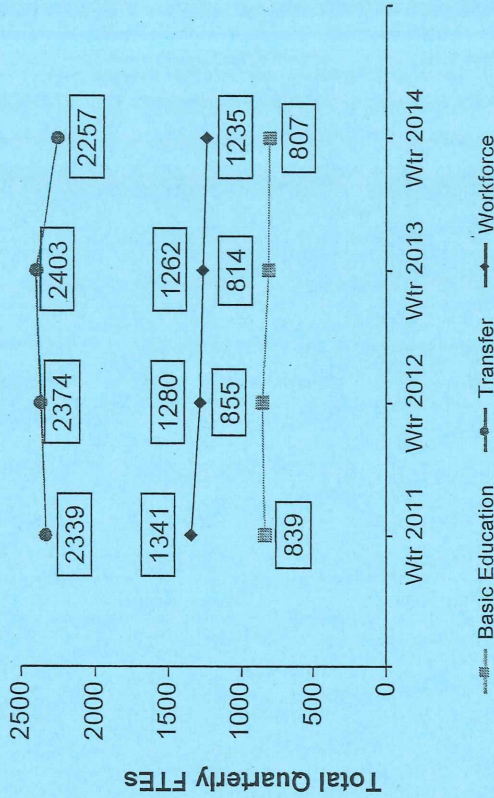


# Quarterly Total Enrollment (FTEs) Comparisons (QENR)

## Ethnicity



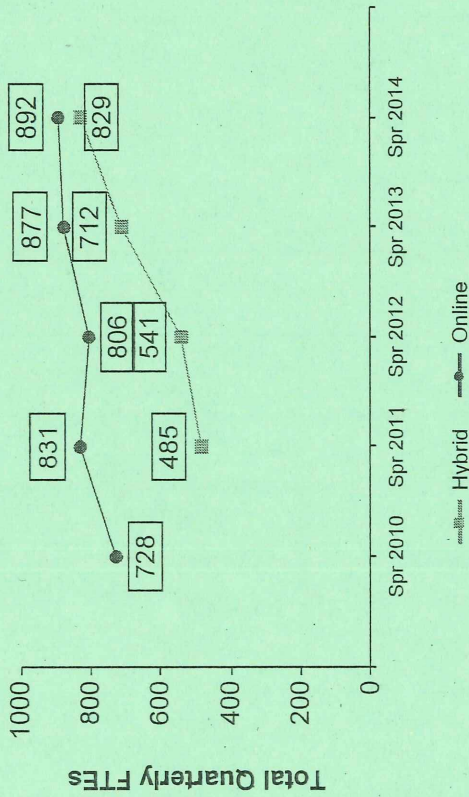
## State-Funded FTEs by Program Type



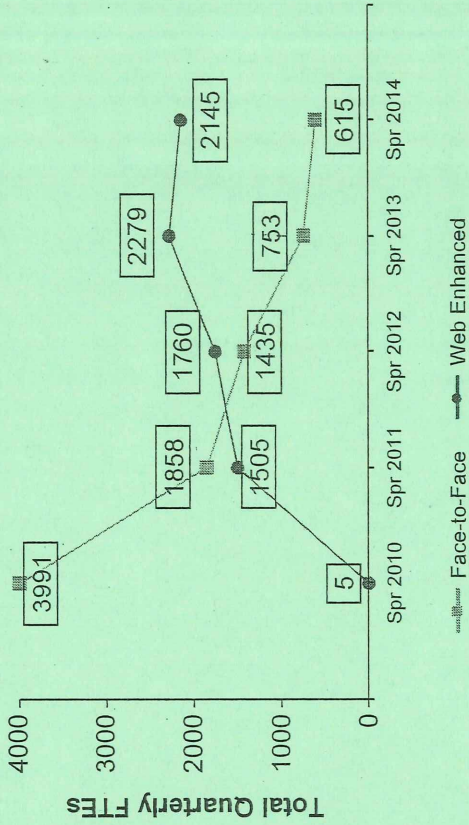


# Quarterly Total Enrollment (FTEs) Comparisons (QENR)

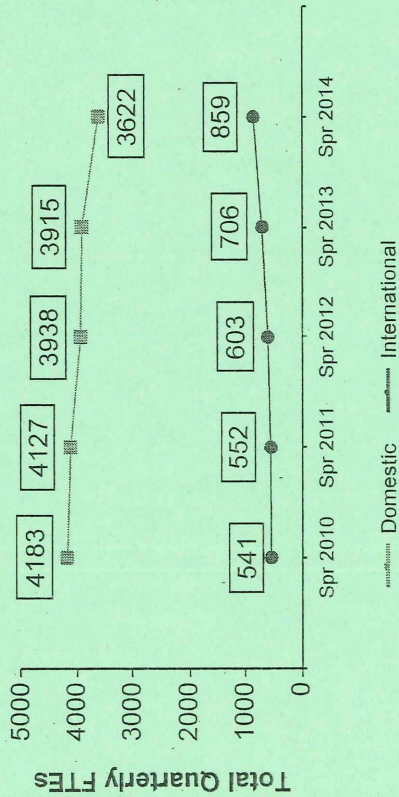
## eLearning - Online and Hybrid



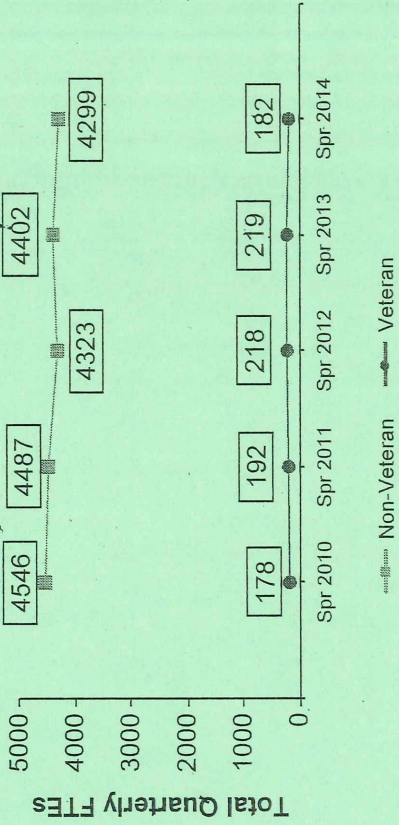
## eLearning - Face-to-face or Other Online and Web Enhanced



## International and Domestic



## Veteran and Non-Veteran





# Quarterly Total Enrollment (FTEs) Comparisons (QENR)

